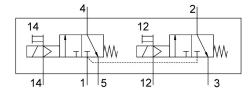


Solenoid valve

VUVS-LT30-T32C-MZD-G38-F8-1B2

Part number: 8036705

FESTO



Data sheet

| Feature | Value |
|---|--|
| Valve function | 2x3/2-way, monostable, closed |
| Type of actuation | Electric |
| Valve size | 31 mm |
| Standard nominal flow rate (standardised to DIN 1343) | 1600 l/min |
| pneumatic working port | G3/8 |
| Operating voltage | 24V DC |
| Operating pressure | 0.1 MPa...1 MPa 1 bar...10 bar |
| Design | Poppet seat |
| Type of reset | Mechanical spring |
| Approval | c UL us - Recognized (OL) |
| Degree of protection | IP65 With plug socket To IEC 60529 |
| Nominal size | 7.9 mm |
| Exhaust-air function | With flow control option |
| Sealing principle | Soft |
| Mounting position | optional |
| Manual override | Detenting Non-detenting |
| Type of piloting | Pilot actuated |
| Pilot air supply | External |
| Flow direction | Non-reversible |
| lap | Underlap |
| Pilot pressure | 0.25 MPa...1 MPa 2.5 bar...10 bar |
| b value | 0.4 |
| C value | 6 l/sbar |
| Switching time off | 33 ms |
| Switching time on | 13 ms |
| Duty cycle | 100% |
| Max. positive test pulse with 0 signal | 2000 µs |
| Max. negative test pulse with 1 signal | 3600 µs |

| Feature | Value |
|------------------------------------|--|
| Characteristic coil data | 24 V DC: 3.3 W |
| Permissible voltage fluctuations | +/- 10 % |
| Operating medium | Compressed air to ISO 8573-1:2010 [7:4:4] |
| Note on operating and pilot medium | Lubricated operation possible (in which case lubricated operation will always be required) |
| Vibration resistance | Transport application test with severity level 2 to FN 942017-4 and EN 60068-2-6 |
| Shock resistance | Shock test with severity level 2 to FN 942017-5 and EN 60068-2-27 |
| Corrosion resistance class CRC | 2 - Moderate corrosion stress |
| LABS (PWIS) conformity | VDMA24364-B1/B2-L |
| Cleanroom class | Class 6 according to ISO 14644-1 |
| Media temperature | -10 °C...60 °C |
| Pilot medium | Compressed air to ISO 8573-1:2010 [7:4:4] |
| Ambient temperature | -10 °C...60 °C |
| Product weight | 543 g |
| Electrical connection | Type B To industry standard (11 mm) |
| Type of mounting | On manifold rail With through-hole Either: |
| Breather connection | Not ducted |
| Pilot exhaust port 82 | M5 |
| Pilot exhaust port 84 | M5 |
| Pilot air port 12 | G1/8 |
| Pilot air port 14 | G1/8 |
| Pneumatic connection, port 1 | G3/8 |
| Pneumatic connection, port 2 | G3/8 |
| Pneumatic connection, port 3 | G3/8 |
| Pneumatic connection, port 4 | G3/8 |
| Pneumatic connection, port 5 | G3/8 |
| Note on materials | RoHS-compliant |
| Material seals | HNBR NBR TPE-U(PU) |
| Material housing | Painted die cast aluminium |
| Material piston slide | Wrought aluminium alloy |
| Material screws | Galvanised steel |