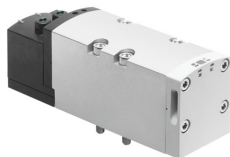


Solenoid valve VSVA-B-P53E-ZTR-D2-1T1L

Part number: 8034959

FESTO



Data sheet

Feature	Value
Valve function	5/3 exhausted
Type of actuation	Electric
Construction width	52 mm
Standard nominal flow rate (standardised to DIN 1343)	2800 l/min
pneumatic working port	Sub-base size 2 to ISO 5599-2 G1/2
Operating voltage	24V DC
Operating pressure	-0.09 MPa...1 MPa -0.9 bar...10 bar
Design	Piston gate valve
Approval	c UL us - Recognized (OL)
KC mark	KC-EMV
CE mark (see declaration of conformity)	To EU EMC Directive
Degree of protection	IP65 NEMA 4
Grid dimension	59 mm
Exhaust-air function	With flow control option Via throttle plate Via individual sub-base
Sealing principle	Soft
Mounting position	optional
Conforms to standard	ISO 5599-2
Manual override	Detenting via accessory Non-detenting
Type of piloting	Pilot actuated
Pilot air supply	External
Flow direction	optional
Signal status display	LED
Pilot pressure	0.3 MPa...1 MPa 3 bar...10 bar
Flow rate of valve	3600 l/min
Flow rate of valve on individual sub-base	3200 l/min
Flow rate of pneumatically interlinked valve	2800 l/min

Feature	Value
Switching time off	60 ms
Switching time on	23 ms
Duty cycle	100%
Max. positive test pulse with 0 signal	1000 µs
Max. negative test pulse with 1 signal	3500 µs
Nominal pick-up current per solenoid coil	165 mA up to 30 ms
Nominal current with current reduction	35 mA after 30 ms
Characteristic coil data	24 V DC: 4.6 W
Immunity to surge	2.5 kV
Pollution degree	3
Permissible voltage fluctuations	+/- 10 %
Operating medium	Compressed air to ISO 8573-1:2010 [7:4:4]
Note on operating and pilot medium	Lubricated operation possible (in which case lubricated operation will always be required)
Vibration resistance	Transport application test with severity level 2 to FN 942017-4 and EN 60068-2-6
Shock resistance	Shock test with severity level 2 to FN 942017-5 and EN 60068-2-27
Corrosion resistance class CRC	0 - No corrosion stress
LABS (PWIS) conformity	VDMA24364-B1/B2-L
Media temperature	-5 °C...50 °C
Relative air humidity	0 - 90%
Ambient temperature	-5 °C...50 °C
Product weight	780 g
Electrical connection	Plug-in To ISO 5599-2
Type of mounting	On sub-base
Pilot air port 12/14	Sub-base size 2 to ISO 5599-2
Pilot exhaust port 82/84	Ducted Not ducted as per standard Either:
Pneumatic connection, port 1	Sub-base size 2 to ISO 5599-2
Pneumatic connection, port 2	Sub-base size 2 to ISO 5599-2
Pneumatic connection, port 3	Sub-base size 2 to ISO 5599-2
Pneumatic connection, port 4	Sub-base size 2 to ISO 5599-2
Pneumatic connection, port 5	Sub-base size 2 to ISO 5599-2
Note on materials	RoHS-compliant
Material seals	FPM HNBR NBR
Material housing	Die-cast aluminium PA
Material screws	Galvanised steel