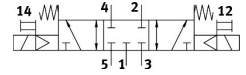
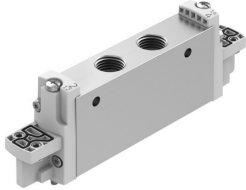


# Solenoid valve VUVG-L18-P53C-G14-P1

Part number: 8033556

**FESTO**



## Data sheet

| Feature   | Value  |
|---|--|
| Valve function  | 5/3 closed   |
| Type of actuation                                     | Electric   |
| Valve size  | 18 mm  |
| Standard nominal flow rate (standardised to DIN 1343) | 1200 l/min   |
| pneumatic working port                                | G1/4   |
| Operating pressure                                    | 0.3 MPa...0.8 MPa<br>3 bar...8 bar   |
| Design  | Piston gate valve  |
| Type of reset   | Mechanical spring  |
| Approval  | c UL us - Recognized (OL)  |
| Certificate issuing authority                         | UL MH19482   |
| Degree of protection                                  | IP65<br>With electric pilot valve and plug socket  |
| Nominal size  | 6.5 mm   |
| Exhaust-air function                                  | With flow control option   |
| Sealing principle                                     | Soft   |
| Mounting position                                     | optional   |
| Type of piloting                                      | Pilot actuated   |
| Pilot air supply                                      | Internal   |
| lap   | Overlap  |
| Pilot pressure  | 0.3 MPa...0.8 MPa<br>3 bar...8 bar   |
| Switching time off                                    | 32 ms  |
| Switching time on                                     | 15 ms  |
| Switching time reversal                               | 21 ms  |
| Duty cycle  | 100%   |
| Max. positive test pulse with 0 signal                | 700 µs   |
| Max. negative test pulse with 1 signal                | 900 µs   |
| Operating medium                                      | Compressed air to ISO 8573-1:2010 [7:4:4]  |
| Note on operating and pilot medium                    | Lubricated operation possible (in which case lubricated operation will always be required) |
| Vibration resistance                                  | Transport application test with severity level 2 to FN 942017-4 and EN 60068-2-6           |

| Feature                        | Value   |
|--------------------------------|---|
| Shock resistance               | Shock test with severity level 2 to FN 942017-5 and EN 60068-2-27 |
| Corrosion resistance class CRC | 2 - Moderate corrosion stress                                     |
| LABS (PWIS) conformity         | VDMA24364-B1/B2-L   |
| Cleanroom class                | Class 5 according to ISO 14644-1                                  |
| Media temperature              | -5 °C...60 °C   |
| Ambient temperature            | -5 °C...60 °C   |
| Product weight                 | 136 g   |
| Electrical connection          | Via electric pilot valve  |
| Type of mounting               | On manifold rail<br>With through-hole<br>Either:                  |
| Pneumatic connection, port 1   | G1/4  |
| Pneumatic connection, port 2   | G1/4  |
| Pneumatic connection, port 3   | G1/4  |
| Pneumatic connection, port 4   | G1/4  |
| Pneumatic connection, port 5   | G1/4  |
| Pilot control interface        | To ISO 15218  |
| Note on materials              | RoHS-compliant  |
| Material seals                 | HNBR<br>NBR   |
| Material housing               | Wrought aluminium alloy   |