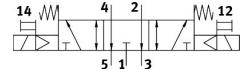
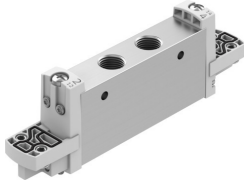


# Solenoid valve VUVG-L14-P53E-G18-P1

Part number: 8033533

**FESTO**



## Data sheet

Feature	Value
Valve function	5/3 exhausted
Type of actuation	Electric
Valve size	14 mm
Standard nominal flow rate (standardised to DIN 1343)	560 l/min
pneumatic working port	G1/8
Operating pressure	0.3 MPa...0.8 MPa 3 bar...8 bar
Design	Piston gate valve
Type of reset	Mechanical spring
Approval	c UL us - Recognized (OL)
Certificate issuing authority	UL MH19482
Degree of protection	IP65 With electric pilot valve and plug socket
Nominal size	5.6 mm
Exhaust-air function	With flow control option
Sealing principle	Soft
Mounting position	optional
Type of piloting	Pilot actuated
Pilot air supply	Internal
lap	Overlap
Pilot pressure	0.3 MPa...0.8 MPa 3 bar...8 bar
Suitability for vacuum	no
Switching time off	24 ms
Switching time on	14 ms
Switching time reversal	20 ms
Duty cycle	100%
Max. positive test pulse with 0 signal	700 µs
Max. negative test pulse with 1 signal	900 µs
Operating medium	Compressed air to ISO 8573-1:2010 [7:4:4]
Note on operating and pilot medium	Lubricated operation possible (in which case lubricated operation will always be required)

Feature	Value
Vibration resistance	Transport application test with severity level 2 to FN 942017-4 and EN 60068-2-6
Shock resistance	Shock test with severity level 2 to FN 942017-5 and EN 60068-2-27
Corrosion resistance class CRC	2 - Moderate corrosion stress
LABS (PWIS) conformity	VDMA24364-B1/B2-L
Cleanroom class	Class 5 according to ISO 14644-1
Media temperature	-5 °C...60 °C
Ambient temperature	-5 °C...60 °C
Product weight	65 g
Electrical connection	Via electric pilot valve
Type of mounting	On manifold rail With through-hole Either:
Pneumatic connection, port 1	G1/8
Pneumatic connection, port 2	G1/8
Pneumatic connection, port 3	G1/8
Pneumatic connection, port 4	G1/8
Pneumatic connection, port 5	G1/8
Pilot control interface	To ISO 15218
Note on materials	RoHS-compliant
Material seals	HNBR NBR
Material housing	Wrought aluminium alloy