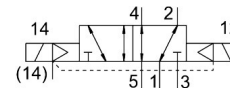
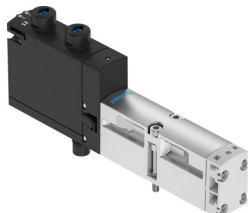


# Solenoid valve VSVA-B-B52-Z-A2-1T1L

Part number: 8033486

**FESTO**



## Data sheet

Feature	Value
Valve function	5/2 double solenoid
Type of actuation	Electric
Construction width	18 mm
Standard nominal flow rate (standardised to DIN 1343)	550 l/min
pneumatic working port	Sub-base size 18 mm to ISO 15407-1 Sub-base size 02 to VDMA 24563 G1/8
Operating voltage	24V DC
Operating pressure	-0.09 MPa...1 MPa -0.9 bar...10 bar
Design	Piston gate valve
Approval	c UL us - Recognized (OL)
Degree of protection	IP65 NEMA 4
Exhaust-air function	With flow control option Via throttle plate Via individual sub-base
Sealing principle	Soft
Mounting position	optional
Manual override	Covered
Type of piloting	Pilot actuated
Pilot air supply	External Internal
Flow direction	optional
lap	Overlap
Signal status display	LED
Pilot pressure	0.3 MPa...1 MPa 3 bar...10 bar
Flow rate of valve	750 l/min
Flow rate of valve on individual sub-base	600 l/min
Valve flow rate, pneumatically linked, flow optimized	700 l/min
Flow rate of pneumatically interlinked valve	550 l/min
Switching time reversal	11 ms
Duty cycle	100%

Feature	Value
Max. positive test pulse with 0 signal	1500 µs
Max. negative test pulse with 1 signal	800 µs
Max. current consumption	72 mA
Nominal operating voltage DC	24 V
Characteristic coil data	24 V DC: 1.6 W
Immunity to surge	2.5 kV
Pollution degree	3
Permissible voltage fluctuations	+/- 10 %
Operating medium	Compressed air to ISO 8573-1:2010 [7:4:4]
Note on operating and pilot medium	Lubricated operation possible (in which case lubricated operation will always be required)
Vibration resistance	Transport application test with severity level 2 to FN 942017-4 and EN 60068-2-6
Shock resistance	Shock test with severity level 2 to FN 942017-5 and EN 60068-2-27
Corrosion resistance class CRC	0 - No corrosion stress
LABS (PWIS) conformity	VDMA24364-B1/B2-L
Relative air humidity	0 - 90%
Pilot medium	Compressed air to ISO 8573-1:2010 [7:4:4]
Ambient temperature	-5 °C...50 °C
Product weight	172 g
Electrical connection	Plug-in To ISO 15407-2
Type of mounting	On sub-base
Pilot air port 12/14	Sub-base size 18 mm to ISO 15407-2
Pilot exhaust port 82/84	Ducted Not ducted as per standard Either:
Pneumatic connection, port 1	Sub-base size 18 mm to ISO 15407-2
Pneumatic connection, port 2	Sub-base size 18 mm to ISO 15407-2
Pneumatic connection, port 3	Sub-base size 18 mm to ISO 15407-2
Pneumatic connection, port 4	Sub-base size 18 mm to ISO 15407-2
Pneumatic connection, port 5	Sub-base size 18 mm to ISO 15407-2
Note on materials	RoHS-compliant
Material seals	FPM HNBR NBR
Material housing	Die-cast aluminium PA
Material screws	Galvanised steel