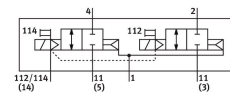
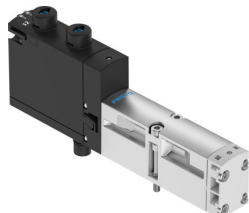


# Solenoid valve

## VSVA-B-T22CV-AZH-A2-1T1L

Part number: 8033476

**FESTO**



## Data sheet

Feature	Value
Valve function	2x2/2-way, monostable, closed
Type of actuation	Electric
Construction width	18 mm
Standard nominal flow rate (standardised to DIN 1343)	500 l/min
pneumatic working port	Sub-base size 18 mm to ISO 15407-1 Sub-base size 02 to VDMA 24563 G1/8
Operating voltage	24V DC
Operating pressure	-0.09 MPa...1 MPa -0.9 bar...10 bar
Design	Piston gate valve
Type of reset	Pneumatic spring
Approval	c UL us - Recognized (OL)
Degree of protection	IP65 NEMA 4
Exhaust-air function	With flow control option Via individual sub-base
Sealing principle	Soft
Mounting position	optional
Manual override	Non-detenting
Type of piloting	Pilot actuated
Pilot air supply	External Internal
Flow direction	optional
lap	Overlap
Signal status display	LED
Pilot pressure	0.3 MPa...1 MPa 3 bar...10 bar
Flow rate of valve	700 l/min
Flow rate of valve on individual sub-base	500 l/min
Valve flow rate, pneumatically linked, flow optimized	650 l/min
Flow rate of pneumatically interlinked valve	500 l/min
Switching time off	38 ms

Feature	Value
Switching time on	20 ms
Duty cycle	100%
Max. positive test pulse with 0 signal	1700 µs
Max. negative test pulse with 1 signal	1200 µs
Max. current consumption	60 mA
Nominal operating voltage DC	24 V
Characteristic coil data	24 V DC: 1.3 W
Immunity to surge	2.5 kV
Pollution degree	3
Permissible voltage fluctuations	+/- 10 %
Operating medium	Compressed air to ISO 8573-1:2010 [7:4:4]
Note on operating and pilot medium	Lubricated operation possible (in which case lubricated operation will always be required)
Vibration resistance	Transport application test with severity level 2 to FN 942017-4 and EN 60068-2-6
Shock resistance	Shock test with severity level 2 to FN 942017-5 and EN 60068-2-27
Corrosion resistance class CRC	0 - No corrosion stress
LABS (PWIS) conformity	VDMA24364-B1/B2-L
Relative air humidity	0 - 90%
Pilot medium	Compressed air to ISO 8573-1:2010 [7:4:4]
Ambient temperature	-5 °C...50 °C
Product weight	190 g
Electrical connection	Plug-in To ISO 15407-2
Type of mounting	On sub-base
Pilot air port 12/14	Sub-base size 18 mm to ISO 15407-2
Pilot exhaust port 82/84	Ducted Not ducted as per standard Either:
Pneumatic connection, port 1	Sub-base size 18 mm to ISO 15407-2
Pneumatic connection, port 2	Sub-base size 18 mm to ISO 15407-2
Pneumatic connection, port 3	Sub-base size 18 mm to ISO 15407-2
Pneumatic connection, port 4	Sub-base size 18 mm to ISO 15407-2
Pneumatic connection, port 5	Sub-base size 18 mm to ISO 15407-2
Note on materials	RoHS-compliant
Material seals	FPM HNBR NBR
Material housing	Die-cast aluminium PA
Material screws	Galvanised steel