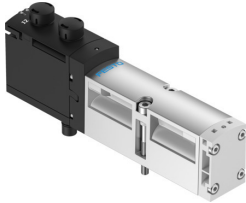


Solenoid valve VSVA-B-...-T1L

Part number: 8033250

FESTO



Data sheet

Feature	Value
Valve function	2x2/2-way, monostable, closed 2x3/2-way, monostable, closed 2x3/2-way, open, monostable 2x3/2-way, open/closed, monostable 5/2 double solenoid 5/2-way, bistable, dominant 5/2-way, monostable 5/3-way, pressurised 1 to 2, 4 to 5 closed 5/3-way, pressurised 5/3 exhausted 5/3 closed
Type of actuation	Electric
Construction width	18 mm 26 mm 42 mm 52 mm
Standard nominal flow rate (standardised to DIN 1343)	2300 l/min
pneumatic working port	Sub-base size 1 to ISO 5599-2 Sub-base size 2 to ISO 5599-2 Sub-base size 18 mm to ISO 15407-1 Sub-base size 26 mm to ISO 15407-1 Sub-base size 01 to VDMA 24563 Sub-base size 02 to VDMA 24563 G1/8 G1/4 G3/8 G1/2
Operating voltage	24V DC
Operating pressure	-0.09 MPa...1 MPa -0.9 bar...10 bar
Design	Piston gate valve
Type of reset	Mechanical spring Pneumatic spring
Approval	C-Tick CSA (OL) c UL us - Recognized (OL)
Degree of protection	IP65 NEMA 4
Sealing principle	Soft

Feature	Value
Mounting position	optional
Manual override	Detenting Detenting via accessory Non-detenting Covered
Type of piloting	Pilot actuated
Pilot air supply	External Internal
Flow direction	optional
lap	Overlap
Signal status display	LED
Pilot pressure	0.3 MPa...1 MPa 3 bar...10 bar
Max. current consumption	60 mA...72 mA
Immunity to surge	2.5 kV
Pollution degree	3
Permissible voltage fluctuations	+/- 10 %
Operating medium	Compressed air to ISO 8573-1:2010 [7:4:4]
Note on operating and pilot medium	Lubricated operation possible (in which case lubricated operation will always be required)
LABS (PWIS) conformity	VDMA24364-B1/B2-L
Relative air humidity	0 - 90%
Ambient temperature	-5 °C...50 °C
Electrical connection	2-pin 4-pin Plugs To ISO 15407-2 To ISO 5599-2
Type of mounting	On sub-base
Note on materials	RoHS-compliant
Material seals	FPM HNBR NBR
Material housing	Die-cast aluminium PA
Material screws	Galvanised steel