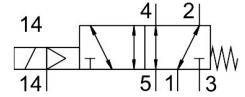
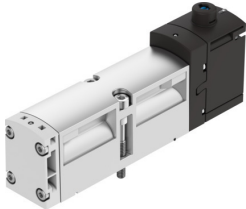


# Solenoid valve VSVA-B-M52-MZ-A1-1T1L

Part number: 8033068

**FESTO**



## Data sheet

Feature	Value
Valve function	5/2-way, monostable
Type of actuation	Electric
Construction width	26 mm
Standard nominal flow rate (standardised to DIN 1343)	1100 l/min
pneumatic working port	Sub-base size 26 mm to ISO 15407-1 Sub-base size 01 to VDMA 24563 G1/4
Operating voltage	24V DC
Operating pressure	-0.09 MPa...1 MPa -0.9 bar...10 bar
Design	Piston gate valve
Type of reset	Mechanical spring
Approval	c UL us - Recognized (OL)
Degree of protection	IP65 NEMA 4
Exhaust-air function	With flow control option Via throttle plate Via individual sub-base
Sealing principle	Soft
Mounting position	optional
Manual override	Covered
Type of piloting	Pilot actuated
Pilot air supply	External Internal
Flow direction	optional
lap	Overlap
Signal status display	LED
Pilot pressure	0.3 MPa...1 MPa 3 bar...10 bar
Flow rate of valve	1400 l/min
Flow rate of valve on individual sub-base	1200 l/min
Valve flow rate, pneumatically linked, flow optimized	1350 l/min
Flow rate of pneumatically interlinked valve	1100 l/min
Switching time off	65 ms

Feature	Value
Switching time on	20 ms
Duty cycle	100%
Max. positive test pulse with 0 signal	1200 µs
Max. negative test pulse with 1 signal	1100 µs
Max. current consumption	72 mA
Nominal operating voltage DC	24 V
Characteristic coil data	24 V DC: 1.6 W
Immunity to surge	2.5 kV
Pollution degree	3
Permissible voltage fluctuations	+/- 10 %
Operating medium	Compressed air to ISO 8573-1:2010 [7:4:4]
Note on operating and pilot medium	Lubricated operation possible (in which case lubricated operation will always be required)
Vibration resistance	Transport application test with severity level 2 to FN 942017-4 and EN 60068-2-6
Shock resistance	Shock test with severity level 2 to FN 942017-5 and EN 60068-2-27
Corrosion resistance class CRC	0 - No corrosion stress
LABS (PWIS) conformity	VDMA24364-B1/B2-L
Relative air humidity	0 - 90%
Pilot medium	Compressed air to ISO 8573-1:2010 [7:4:4]
Ambient temperature	-5 °C...50 °C
Product weight	293 g
Electrical connection	Plug-in To ISO 15407-2
Type of mounting	On sub-base
Pilot air port 12/14	Sub-base size 26 mm to ISO 15407-2
Pilot exhaust port 82/84	Ducted Not ducted as per standard Either:
Pneumatic connection, port 1	Sub-base size 26 mm to ISO 15407-2
Pneumatic connection, port 2	Sub-base size 26 mm to ISO 15407-2
Pneumatic connection, port 3	Sub-base size 26 mm to ISO 15407-2
Pneumatic connection, port 4	Sub-base size 26 mm to ISO 15407-2
Pneumatic connection, port 5	Sub-base size 26 mm to ISO 15407-2
Note on materials	RoHS-compliant
Material seals	FPM HNBR NBR
Material housing	Die-cast aluminium PA
Material screws	Galvanised steel