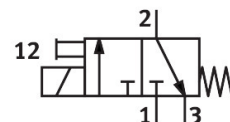
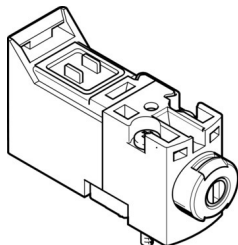


Solenoid valve

MHA1-M5R-3/2G-0,6-P3

Part number: 8025225

FESTO



Data sheet

Feature	Value
Valve function	3/2-way, closed, monostable
Type of actuation	Electric
Construction width	10 mm
Standard nominal flow rate (standardised to DIN 1343)	10 l/min
pneumatic working port	Sub-base
Operating voltage	12V DC
Operating pressure	0.15 MPa...0.8 MPa 1.5 bar...8 bar 21.75 psi...116 psi
Design	Poppet valve with spring return
Type of reset	Mechanical spring
Degree of protection	IP40 IP65
Approval	c UL us - Recognized (OL)
Certificate issuing authority	UL MH19482
Nominal size	0.65 mm
Grid dimension	10 mm
Exhaust-air function	With flow control option
Sealing principle	Soft
Mounting position	optional
Manual override	Detenting Non-detenting
Type of piloting	Direct
Flow direction	Non-reversible
lap	Underlap
Note on forced dynamization	Switching frequency min. 1/week
Max. switching frequency	10 Hz
Switching time off	5 ms
Switching time on	5 ms
Duty cycle	100%
Electrical power consumption	1 W
Characteristic coil data	12 V DC: 1.0 W

Feature	Value
Permissible voltage fluctuations	+/- 10 %
Operating medium	Compressed air to ISO 8573-1:2010 [7:4:4]
Note on operating and pilot medium	Lubricated operation possible (in which case lubricated operation will always be required)
Vibration resistance	Transport application test with severity level 2 to FN 942017-4 and EN 60068-2-6
Shock resistance	Shock test with severity level 2 to FN 942017-5 and EN 60068-2-27
Corrosion resistance class CRC	2 - Moderate corrosion stress
LABS (PWIS) conformity	VDMA24364-B2-L
Storage temperature	-20 °C...60 °C
Media temperature	-5 °C...50 °C
Ambient temperature	-5 °C...40 °C
Product weight	10 g
Electrical connection	Via electrical sub-base
Type of mounting	On sub-base With through-hole
Pneumatic connection, port 1	Sub-base
Pneumatic connection, port 2	Sub-base
Pneumatic connection, port 3	Sub-base
Note on materials	RoHS-compliant
Material seals	FPM HNBR NBR
Material housing	PA-reinforced PPS reinforced