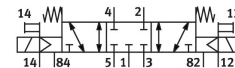
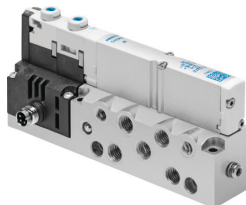


Solenoid valve VMPA14-M1H-G-S-G1/8-PI

Part number: 8023563

FESTO



Data sheet

| Feature | Value |
|---|---|
| Valve function | 5/3 closed |
| Type of actuation | Electric |
| Valve size | 14 mm |
| Standard nominal flow rate (standardised to DIN 1343) | 540 l/min |
| pneumatic working port | G1/8 |
| Operating voltage | 24V DC |
| Operating pressure | -0.09 MPa...1 MPa -0.9 bar...10 bar |
| Design | Piston gate valve |
| Type of reset | Mechanical spring |
| Approval | c UL us - Recognized (OL) |
| CE mark (see declaration of conformity) | To EU EMC Directive In accordance with EU RoHS Directive |
| UKCA marking (see declaration of conformity) | To UK instructions for EMC To UK RoHS instructions |
| Degree of protection | IP65 To IEC 60529 |
| Exhaust-air function | With flow control option |
| Sealing principle | Soft |
| Mounting position | optional |
| Manual override | Detenting Non-detenting |
| Type of piloting | Pilot actuated |
| Pilot air supply | External |
| Flow direction | Reversible |
| lap | Overlap |
| Signal status display | yes |
| Pilot pressure | 0.3 MPa...0.8 MPa 3 bar...8 bar |
| Suitability for vacuum | yes |
| Standard nominal flow rate with QS-8 | 540 l/min |
| Switching time off | 44 ms |
| Switching time on | 13 ms |

| Feature | Value |
|---|--|
| Switching time reversal | 26 ms |
| Max. positive test pulse with 0 signal | 400 µs |
| Max. negative test pulse with 1 signal | 200 µs |
| Permissible voltage fluctuations | +/- 25% |
| Operating medium | Compressed air to ISO 8573-1:2010 [7:4:4] |
| Note on operating and pilot medium | Lubricated operation possible (in which case lubricated operation will always be required) |
| Vibration resistance | Transport application test with severity level 2 to FN 942017-4 and EN 60068-2-6 |
| Shock resistance | Shock test with severity level 2 to FN 942017-5 and EN 60068-2-27 |
| Corrosion resistance class CRC | 1 - Low corrosion stress |
| LABS (PWIS) conformity | VDMA24364-B1/B2-L |
| Storage temperature | -20 °C...40 °C |
| Media temperature | -5 °C...50 °C |
| Relative air humidity | Max. 90% at 40°C |
| Ambient temperature | -5 °C...50 °C |
| Max. tightening torque for valve mounting | 0.65 Nm |
| Product weight | 255 g |
| Electrical connection | 4-pin M8x1 Plugs To EN 60947-5-2 |
| Type of mounting | With through-hole |
| Pilot air port 12/14 | M5 |
| Pilot exhaust port 82/84 | M5 |
| Pneumatic connection, port 1 | G1/8 |
| Pneumatic connection, port 2 | G1/8 |
| Pneumatic connection, port 3 | G1/8 |
| Pneumatic connection, port 4 | G1/8 |
| Pneumatic connection, port 5 | G1/8 |
| Note on materials | RoHS-compliant |
| Material seals | NBR |
| Material housing | Die-cast aluminium |