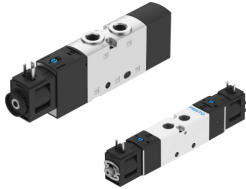


Solenoid valve VUVS-25

Part number: 8022014

FESTO



Data sheet

Feature	Value
Valve function	2x3/2-way, monostable, closed 2x3/2-way, open, monostable 2x3/2-way, open/closed, monostable 3/2-way, closed, monostable 3/2 open, single solenoid 5/2 double solenoid 5/2-way, monostable 5/3-way, pressurised 5/3 exhausted 5/3 closed
Type of actuation	Electric
Valve size	26.5 mm
Standard nominal flow rate (standardised to DIN 1343)	1000 l/min...1300 l/min
pneumatic working port	G1/4 1/4 NPT QS-6 QS-8 QS-10 QS-1/4 QS-5/16 QS-3/8
Operating voltage	110V AC 120V AC 12V DC 230V AC 240V AC 24V AC 24V DC Via solenoid coil, must be ordered separately
Operating pressure	-0.9 bar...10 bar
Design	Piston gate valve Poppet seat
Type of reset	Mechanical spring Pneumatic spring
Approval	c UL us - Recognized (OL)
Maritime classification	See certificate
CE mark (see declaration of conformity)	To EU Explosion Protection Directive (ATEX) To EU Low Voltage Directive

Feature	Value
Explosion protection certification outside the EU	Class I, Div. 1 (US) Class II, Div. 1 (US) Class III, Div. 1 (US) EPL Db (IEC-EX) EPL Dc (GB) EPL Ga (IEC-EX) EPL Gb (IECEX) EPL Gc (GB)
UKCA marking (see declaration of conformity)	To UK EX instructions To UK regulations for electrical equipment
ATEX category gas	II 2G II 3G
ATEX category dust	II 2D II 3D
Explosion ignition protection type for gas	AEx m II T4 Ex ec IIC T4 Gc X Ex ia IIC T6, T4 Gb Ex m II T4 Ex mb IIC T6 Gb Ex nA IIC T5/T4 X Gc
Explosion ignition protection type for dust	Ex mb tb IIIC T80°C Db Ex tb IIIC T80°C, T130°C Db IP65 Ex tc IIIC T115°C Dc X Ex tc IIIC T95°C/T105°C X Dc
Explosion ambient temperature	-10 °C ≤ Ta ≤ +60 °C -20 °C ≤ Ta ≤ +50 °C -20°C ≤ Ta ≤ +60°C
Degree of protection	IP65 IP67 With plug socket To IEC 60529
Exhaust-air function	With flow control option
Sealing principle	Soft
Mounting position	optional
Type of piloting	Pilot actuated
Explosion protection	Class I, Div. 1 (US) Class II, Div. 1 (US) Class III, Div. 1 (US) The information in the certificate must be observed! Zone 0 (IEC-EX) Zone 1 (ATEX) Zone 1 (IEC-EX) Zone 2 (ATEX) Zone 2 (UKEX) Zone 21 (ATEX) Zone 21 (IEC-EX) Zone 22 (ATEX) Zone 22 (UKEX)
Operating medium	Compressed air to ISO 8573-1:2010 [7:4:4]
Note on operating and pilot medium	Lubricated operation possible (in which case lubricated operation will always be required)
Corrosion resistance class CRC	2 - Moderate corrosion stress
LABS (PWIS) conformity	VDMA24364-B1/B2-L
Cleanroom class	Class 6 according to ISO 14644-1
Pilot medium	Compressed air to ISO 8573-1:2010 [7:4:4]
Type of mounting	On manifold rail With through-hole Either:
Breather connection	Not ducted
Note on materials	RoHS-compliant
Material housing	Die-cast aluminium Painted
Material screws	Galvanised steel