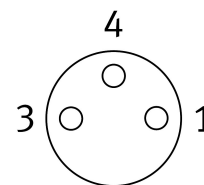
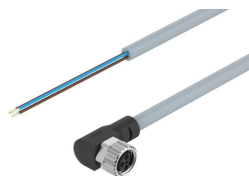


# Connecting cable NEBU-M8R3-K-2.5-LE3

Part number: 8001660

**FESTO**



## Data sheet

Feature	Value
Based on standard	EN 61076-2-104
Conforms to standard	Wire colours and connection numbers to EN 60947-5-2
Cable designation	With 2x inscription label holders
Product weight	64 g
Electrical connection 1, function	Field device side
Electrical connection 1, design	Round
Electrical connection 1, connection type	Socket
Electrical connection 1, cable outlet	Angled, can be aligned in increments of 15°
Electrical connection 1, connector system	M8x1, A-coded, to EN 61076-2-104
Electrical connection 1, number of connections/cores	3
Electrical connection 1, used connections/cores	3
Electrical connection 1, type of mounting	Screw-type lock
Electrical connection 2, function	Controller side
Electrical connection 2, connection type	Cable
Electrical connection 2, connector system	Open end
Electrical connection 2, number of connections/cores	3
Electrical connection 2, used connections/cores	3
Operational voltage range DC	0 V...60 V
Operational voltage range AC	0 V...60 V
Current rating at 40° C	0.5 A
Immunity to surge	1.5 kV
Cable length	2.5 m
Cable characteristic	Standard
Test conditions cable	Bending strength: to Festo standard Test conditions on request Energy chain: > 5 million cycles, bending radius 75 mm
Bending radius, fixed cable	12 mm
Bending radius, moving cable	39 mm
Cable diameter	3.8 mm
Cable diameter tolerance	± 0.1 mm

Feature	Value
Cable structure	3 x 0.25 mm <sup>2</sup>
Nominal cross section conductor	0.25 mm <sup>2</sup>
Degree of protection	IP65 IP68 IP69K
Note on degree of protection	In assembled state
Special characteristics	Oil resistant
Ambient temperature	-25 °C...70 °C
Ambient temperature with moving cable	-5 °C...70 °C
CE mark (see declaration of conformity)	To EU Low Voltage Directive In accordance with EU RoHS Directive
CE marking (see declaration of conformity)	To UK RoHS instructions To UK regulations for electrical equipment
LABS (PWIS) conformity	VDMA24364-B2-L
Note on materials	RoHS-compliant Free of halogen Free of phosphoric acid ester
Pollution degree	3
Corrosion resistance class CRC	2 - Moderate corrosion stress
Material cable sheath	TPE-U(PUR)
Cable sheath colour	Grey
Material housing	TPE-U(PUR)
Housing colour	Black
Material screw-type lock	Nickel-plated brass
Material seals	NBR
Material electrical contact	Gold-plated copper alloy
Material insulating sheath	PP