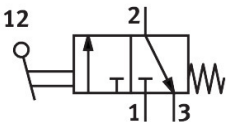


Finger lever valve TH-3-M5

Part number: 6758

FESTO



Data sheet

Feature	Value
Valve function	3/2-way, closed, monostable
Standard nominal flow rate (standardised to DIN 1343)	80 l/min
pneumatic working port	M5
Operating pressure	-0.95 bar...8 bar
Design	Poppet seat
Nominal size	2 mm
Type of piloting	Direct
Operating medium	Compressed air to ISO 8573-1:2010 [:-:-]
Note on operating and pilot medium	Lubricated operation possible (in which case lubricated operation will always be required)
LABS (PWIS) conformity	VDMA24364-B1/B2-L
Ambient temperature	-10 °C...60 °C
Actuating force	8 N
Product weight	37 g
Type of mounting	With through-hole
Pneumatic connection, port 1	M5
Pneumatic connection, port 2	M5
Material seals	NBR
Material housing	Die-cast zinc