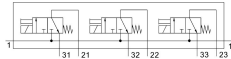
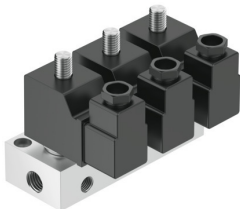


Solenoid valve

BMCH-3-3-1/8

Part number: 6687

FESTO



Data sheet

Feature	Value
Valve function	3x3/2-way, monostable, closed
Type of actuation	Electric
Standard nominal flow rate (standardised to DIN 1343)	160 l/min
pneumatic working port	G1/8
Operating pressure	-0.095 MPa...0.7 MPa -0.95 bar...7 bar
Design	Poppet valve with spring return
Type of reset	Mechanical spring
Degree of protection	IP65
Nominal size	2.5 mm
Sealing principle	Soft
Max. number of valve positions	3
Type of piloting	Direct
Suitability for vacuum	yes
Power consumption, pull	30 W
Power consumption, hold	22 W
Operating medium	Compressed air to ISO 8573-1:2010 [7:4:4]
Note on operating and pilot medium	Lubricated operation possible (in which case lubricated operation will always be required)
LABS (PWIS) conformity	VDMA24364-B2-L
Media temperature	-10 °C...60 °C
Ambient temperature	-5 °C...40 °C
Product weight	1010 g
Electrical connection	Plugs
Type of mounting	With through-hole
Pneumatic connection, port 1	G1/4
Pneumatic connection, port 2	G1/8
Pneumatic connection, port 3	G1/8
Material housing	Aluminium