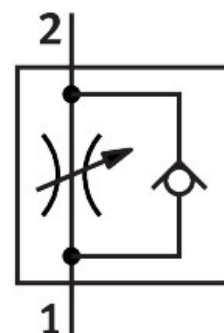


# One-way flow control valve GR-3/8-B

Part number: 6308

**FESTO**



## Data sheet

Feature	Value
Valve function	One-way flow control function
Pneumatic connection, port 1	Female thread G3/8
Pneumatic connection, port 2	Female thread G3/8
Adjustment component	Knurled screw
Type of mounting	Front panel mounting With through-hole Either:
Standard nominal flow rate in flow control direction	1010 l/min
Standard nominal flow rate in blocked direction	1150 l/min
Operating pressure	0.01 MPa...1 MPa 0.1 bar...10 bar 1.45 psi...145 psi
Ambient temperature	-20 °C...75 °C
Material housing	Die-cast zinc
Explosion protection	The information in the certificate must be observed! Zone 1 (ATEX) Zone 2 (ATEX) Zone 21 (ATEX) Zone 22 (ATEX)
Mounting position	optional
Operating medium	Compressed air to ISO 8573-1:2010 [7:4:4]
Note on operating and pilot medium	Lubricated operation possible (in which case lubricated operation will always be required)
LABS (PWIS) conformity	VDMA24364-B1/B2-L
Media temperature	-20 °C...75 °C
Product weight	225 g
Note on materials	RoHS-compliant
Material adjusting screw	Brass