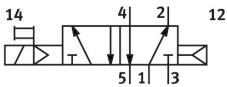
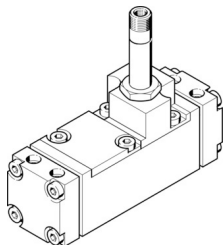


Solenoid valve
CM-5/2-1/2-FH
Part number: 6223



Data sheet

| Feature | Value |
|------------------------------|---------------------|
| Valve function | 5/2-way, monostable |
| pneumatic working port | G1/2 |
| Operating pressure | 1.5 bar...8 bar |
| LABS (PWIS) conformity | VDMA24364 zone III |
| Pneumatic connection, port 1 | G1/2 |
| Pneumatic connection, port 2 | G1/2 |
| Pneumatic connection, port 3 | G1/2 |
| Pneumatic connection, port 4 | G1/2 |
| Pneumatic connection, port 5 | G1/2 |