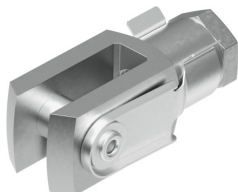


**Rod clevis**  
**SG-M10X1,25**  
Part number: 6144

**FESTO**



**Data sheet**

Feature	Value
Size	M10x1.25
Conforms to standard	DIN 71752 ISO 8140
Threaded connection	Female thread M10x1.25
Corrosion resistance class CRC	1 - Low corrosion stress
LABS (PWIS) conformity	VDMA24364-B2-L
Suitability for the production of Li-ion batteries	Metals with more than 1% by mass of copper are excluded from use. Exceptions are printed circuit boards, cables, electrical plug connectors and coils
Ambient temperature	-40 °C...150 °C
Max. load capacity	0.9 kN
Product weight	103 g
Note on materials	RoHS-compliant
Material bolt	Steel Galvanised
Material clevis	Steel Galvanised
Material nut	Steel Galvanised