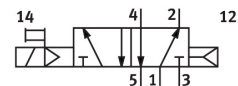
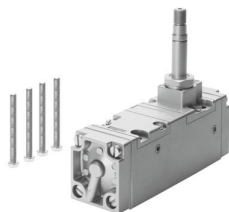


Solenoid valve CM-5/2-1/4-CH

Part number: 5960

FESTO



Data sheet

| Feature | Value |
|---|--|
| Valve function | 5/2-way, monostable |
| Type of actuation | Electric |
| Standard nominal flow rate (standardised to DIN 1343) | 1400 l/min |
| pneumatic working port | Sub-base |
| Operating pressure | 1.5 bar...10 bar |
| Type of reset | Pneumatic spring |
| Nominal size | 6.5 mm |
| Mounting position | optional |
| Manual override | Non-detenting |
| Type of piloting | Pilot actuated |
| Max. switching frequency | 40 Hz |
| Switching time on | 28 ms |
| Operating medium | Compressed air to ISO 8573-1:2010 [7:4:4] |
| Note on operating and pilot medium | Lubricated operation possible (in which case lubricated operation will always be required) |
| LABS (PWIS) conformity | VDMA24364 zone III |
| Media temperature | -10 °C...60 °C |
| Type of mounting | On sub-base |
| Pilot air port 12 | G1/8 |
| Pilot air port 14 | G1/8 |
| Pneumatic connection, port 1 | G1/4 |
| Pneumatic connection, port 2 | G1/4 |
| Pneumatic connection, port 3 | G1/4 |
| Pneumatic connection, port 4 | G1/4 |
| Pneumatic connection, port 5 | G1/4 |
| Material seals | NBR |
| Material housing | Wrought aluminium alloy |
| Material membrane | PUR |