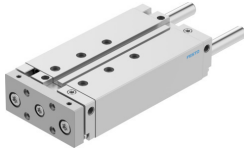


Guided drive DFM-32-125-B-PPV-A-GF

Part number: 578879

FESTO



Data sheet

Feature	Value
Stroke	125 mm
Piston diameter	32 mm
Operating mode, drive unit	Yoke
Cushioning	Pneumatic cushioning, adjustable at both ends
Mounting position	optional
Guide	Plain-bearing guide
Design	Guidance
Position detection	Via proximity switch
Operating pressure	0.15 MPa...1 MPa 1.5 bar...10 bar
Mode of operation	Double-acting
Operating medium	Compressed air to ISO 8573-1:2010 [7:4:4]
Note on operating and pilot medium	Lubricated operation possible (in which case lubricated operation will always be required)
Corrosion resistance class CRC	2 - Moderate corrosion stress
LABS (PWIS) conformity	VDMA24364-B1/B2-L
Cleanroom class	Class 7 according to ISO 14644-1
Ambient temperature	-20 °C...80 °C
Impact energy in end positions	0.4 J
Theoretical force at 0.6 MPa (6 bar, 87 psi), return stroke	415 N
Theoretical force at 0.6 MPa (6 bar, 87 psi), advance stroke	482 N
alternative connections	See product drawing
Pneumatic connection	G1/8
Note on materials	RoHS-compliant
Material cover	Wrought aluminium alloy
Material seals	NBR
Material housing	Wrought aluminium alloy
Material piston rod	High-alloy stainless steel