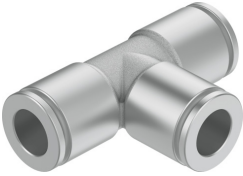


# Push-in T-connector NPQH-T-Q10-Q8-P10

Part number: 578388

**FESTO**



## Data sheet

| Feature                                       | Value   |
|---|---|
| Size  | Standard  |
| Nominal size                                  | 7 mm  |
| Tubing insertion depth                        | 16 mm...18.3 mm   |
| Note on the tubing insertion depth            | Ø8 depth 16 mm<br>Ø10 depth 18.3 mm                                   |
| Mounting position                             | optional  |
| Design  | T-shape<br>Push-pull principle  |
| Size of pack                                  | 10  |
| Operating pressure complete temperature range | -0.095 MPa...2 MPa<br>-0.95 bar...20 bar<br>-13.775 psi...290 psi     |
| Note on operating pressure                    | Water: max. 0.6 MPa at 0 - 50 °C                                      |
| Certificate issuing authority                 | NSF C0523185  |
| Operating medium                              | Compressed air to ISO 8573-1:2010 [7:...]<br>Water (liquid, ice-free) |
| Note on operating and pilot medium            | Lubricated operation possible   |
| Corrosion resistance class CRC                | 3 - high corrosion stress   |
| LABS (PWIS) conformity                        | VDMA24364-B1/B2-L   |
| Cleanroom class                               | Class 4 according to ISO 14644-1                                      |
| Suitable for use with food                    | See declaration of conformity<br>NSF/ANSI 169                         |
| Ambient temperature                           | 0 °C...150 °C   |
| Product weight                                | 39.6 g  |
| Pneumatic connection, port 1                  | For tubing outer diameter of 10 mm                                    |
| Pneumatic connection, port 2                  | For tubing outside diameter of 8 mm                                   |
| Note on materials                             | RoHS-compliant  |
| Material housing                              | Brass, chemically nickel-plated                                       |
| Guard ring material                           | PEI   |
| Material release ring                         | Brass, chemically nickel-plated                                       |
| Material tubing seal                          | FPM   |
| Material tubing clamp component               | High-alloy stainless steel  |
| Thrust ring material                          | PEI   |