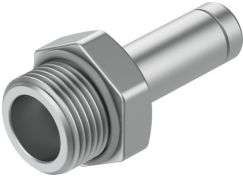


Push-in fitting NPQH-D-G14-S6-P10

Part number: 578363

FESTO



Data sheet

Feature	Value
Size	Standard
Nominal size	4 mm
Type of seal on screwed plug	Sealing ring
Mounting position	optional
Design	Straight design Push-pull principle
Size of pack	10
Operating pressure complete temperature range	-0.095 MPa...2 MPa -0.95 bar...20 bar -13.775 psi...290 psi
Note on operating pressure	Water: max. 0.6 MPa at 0 - 50 °C
Certificate issuing authority	NSF C0523185
Operating medium	Compressed air to ISO 8573-1:2010 [7:-:-] Water (liquid, ice-free)
Note on operating and pilot medium	Lubricated operation possible
Corrosion resistance class CRC	3 - high corrosion stress
LABS (PWIS) conformity	VDMA24364-B1/B2-L
Cleanroom class	Element installed statically, no meaningful evaluation possible according to ISO 14644-1
Suitable for use with food	See declaration of conformity NSF/ANSI 169
Ambient temperature	0 °C...150 °C
Nominal torque	7.5 Nm
Tolerance for nominal tightening torque	± 20%
Product weight	13.9 g
Type of mounting	External hexagon, A/F 16 mm
Pneumatic connection, port 1	Male thread G1/4
Pneumatic connection, port 2	Push-in sleeve Ø 6 mm
Note on materials	RoHS-compliant
Material housing	Brass, chemically nickel-plated
Material thread seal	FPM