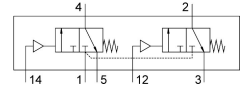


Pneumatic valve VUWS-LT20-T32C-M-N18

Part number: 577536

FESTO



Data sheet

| Feature | Value |
|---|--|
| Valve function | 2x3/2-way, monostable, closed |
| Type of actuation | Pneumatic |
| Valve size | 21 mm |
| Standard nominal flow rate (standardised to DIN 1343) | 600 l/min |
| pneumatic working port | 1/8 NPT |
| Operating pressure | -0.09 MPa...1 MPa -0.9 bar...10 bar |
| Design | Poppet seat |
| Type of reset | Mechanical spring |
| Approval | c UL us - Recognized (OL) |
| Nominal size | 5.2 mm |
| Exhaust-air function | With flow control option |
| Sealing principle | Soft |
| Mounting position | optional |
| Manual override | None |
| Type of piloting | Direct |
| Pilot air supply | Internal |
| Flow direction | Non-reversible |
| lap | Underlap |
| Pilot pressure | 0.15 MPa...1 MPa 1.5 bar...10 bar |
| Switching time off | 19 ms |
| Switching time on | 6 ms |
| Explosion protection | The information in the certificate must be observed! Zone 1 (ATEX) Zone 2 (ATEX) Zone 21 (ATEX) Zone 22 (ATEX) |
| Operating medium | Compressed air to ISO 8573-1:2010 [7:4:4] |
| Note on operating and pilot medium | Lubricated operation possible (in which case lubricated operation will always be required) |
| Vibration resistance | Transport application test with severity level 2 to FN 942017-4 and EN 60068-2-6 |
| Shock resistance | Shock test with severity level 2 to FN 942017-5 and EN 60068-2-27 |

| Feature | Value |
|--------------------------------|--|
| Corrosion resistance class CRC | 2 - Moderate corrosion stress |
| LABS (PWIS) conformity | VDMA24364-B1/B2-L |
| Cleanroom class | Class 6 according to ISO 14644-1 |
| Media temperature | -10 °C...60 °C |
| Pilot medium | Compressed air to ISO 8573-1:2010 [7:4:4] |
| Ambient temperature | -5 °C...60 °C |
| Product weight | 189 g |
| Type of mounting | On manifold rail With through-hole Either: |
| Breather connection | Not ducted |
| Pilot air port 12 | 10-32 UNF-2B |
| Pilot air port 14 | 10-32 UNF-2B |
| Pneumatic connection, port 1 | 1/8 NPT |
| Pneumatic connection, port 2 | 1/8 NPT |
| Pneumatic connection, port 3 | 1/8 NPT |
| Note on materials | RoHS-compliant |
| Material seals | HNBR NBR TPE-U(PU) |
| Material housing | Die-cast aluminium Painted |
| Material screws | Galvanised steel |