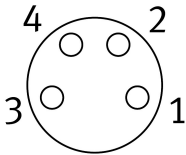
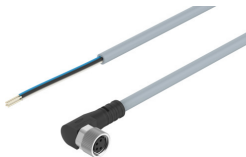


**Connecting cable**  
**NEBU-M8W4-K-10-LE4**  
Part number: 575833

**FESTO**



**Data sheet**

Feature	Value
Conforms to standard	Wire colours and connection numbers to EN 60947-5-2 EN 61076-2-104
Explosion protection	The information in the certificate must be observed! Zone 2 (ATEX) Zone 22 (ATEX)
Cable designation	With 2x inscription label holders
Product weight	272 g
Electrical connection 1, function	Field device side
Electrical connection 1, design	Round
Electrical connection 1, connection type	Socket
Electrical connection 1, cable outlet	Angled
Electrical connection 1, connector system	M8x1, A-coded, to EN 61076-2-104
Electrical connection 1, number of connections/cores	4
Electrical connection 1, used connections/cores	4
Electrical connection 1, type of mounting	Screw-type lock
Electrical connection 2, function	Controller side
Electrical connection 2, connection type	Cable
Electrical connection 2, connector system	Open end
Electrical connection 2, number of connections/cores	4
Electrical connection 2, used connections/cores	4
Operational voltage range DC	0 V...30 V
Operational voltage range AC	0 V...30 V
Current rating at 40° C	3 A
Immunity to surge	0.8 kV
Cable length	10 m
Cable characteristic	Standard
Test conditions cable	Bending strength: to Festo standard Test conditions on request Energy chain: > 5 million cycles, bending radius 75 mm
Bending radius, fixed cable	14 mm
Bending radius, moving cable	46 mm

Feature	Value
Cable diameter	4.5 mm
Cable diameter tolerance	± 0.1 mm
Cable structure	4 x 0.25 mm <sup>2</sup>
Nominal cross section conductor	0.25 mm <sup>2</sup>
Degree of protection	IP65 IP68 IP69K
Note on degree of protection	In assembled state
Special characteristics	Oil resistant
Ambient temperature	-25 °C...70 °C
Ambient temperature with moving cable	-5 °C...70 °C
CE mark (see declaration of conformity)	In accordance with EU RoHS Directive
CE marking (see declaration of conformity)	To UK RoHS instructions
LABS (PWIS) conformity	VDMA24364-B2-L
Note on materials	RoHS-compliant Free of halogen Free of phosphoric acid ester
Pollution degree	3
Corrosion resistance class CRC	2 - Moderate corrosion stress
Material cable sheath	TPE-U(PUR)
Cable sheath colour	Grey
Material housing	TPE-U(PUR)
Housing colour	Black
Material screw-type lock	Nickel-plated brass
Material seals	NBR
Material electrical contact	Gold-plated copper alloy
Material insulating sheath	PP