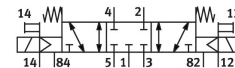


# Solenoid valve VUVS-L30-P53C-MZD-G38-F8

Part number: 575617

**FESTO**



## Data sheet

Feature	Value
Valve function	5/3 closed
Type of actuation	Electric
Valve size	31 mm
Standard nominal flow rate (standardised to DIN 1343)	2000 l/min
pneumatic working port	G3/8
Operating pressure	-0.09 MPa...1 MPa -0.9 bar...10 bar
Design	Piston gate valve
Type of reset	Mechanical spring
Approval	c UL us - Recognized (OL)
Maritime classification	See certificate
Certificate issuing authority	DNVGL-TAA000011J
Nominal size	8.9 mm
Exhaust-air function	With flow control option
Sealing principle	Soft
Mounting position	optional
Manual override	Detenting Non-detenting
Type of piloting	Pilot actuated
Pilot air supply	External
Flow direction	Reversible
lap	Overlap
Pilot pressure	0.25 MPa...1 MPa 2.5 bar...10 bar
b value	0.4
C value	8.9 l/sbar
Switching time off	76 ms
Switching time on	17 ms
Switching time reversal	39 ms
Max. positive test pulse with 0 signal	2000 µs
Max. negative test pulse with 1 signal	3600 µs
Operating medium	Compressed air to ISO 8573-1:2010 [7:4:4]

Feature	Value
Note on operating and pilot medium	Lubricated operation possible (in which case lubricated operation will always be required)
Vibration resistance	Transport application test with severity level 2 to FN 942017-4 and EN 60068-2-6
Shock resistance	Shock test with severity level 2 to FN 942017-5 and EN 60068-2-27
Corrosion resistance class CRC	2 - Moderate corrosion stress
LABS (PWIS) conformity	VDMA24364-B1/B2-L
Cleanroom class	Class 6 according to ISO 14644-1
Media temperature	-10 °C...60 °C
Pilot medium	Compressed air to ISO 8573-1:2010 [7:4:4]
Ambient temperature	-10 °C...60 °C
Product weight	461 g
Type of mounting	On manifold rail With through-hole Either:
Breather connection	Not ducted
Pilot exhaust port 82	M5
Pilot exhaust port 84	M5
Pilot air port 12	G1/8
Pilot air port 14	G1/8
Pneumatic connection, port 1	G3/8
Pneumatic connection, port 2	G3/8
Pneumatic connection, port 3	G3/8
Pneumatic connection, port 4	G3/8
Pneumatic connection, port 5	G3/8
Note on materials	RoHS-compliant
Material seals	HNBR NBR
Material housing	Die-cast aluminium Painted
Material piston slide	Wrought aluminium alloy
Material screws	Nickel-plated steel