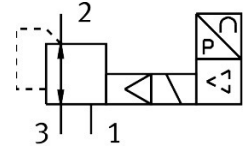


Proportional-pressure regulator VPPM-12L-L-1-G12-0L10H-A4N-S1

Part number: 575232

FESTO



Data sheet

Feature	Value
Nominal size, supply	12 mm
Nominal size, exhaust	12 mm
Type of actuation	Electric
Sealing principle	Soft
Mounting position	optional
Design	Piloted diaphragm regulator
Short circuit current rating	For all electrical connections
Safety instructions	Safety position VPPM: if the power supply cable is interrupted, output pressure is maintained unregulated.
Reverse polarity protection	For all electrical connections
Type of reset	Mechanical spring
Type of piloting	Pilot actuated
Valve function	3-way proportional pressure regulator
Display type	LED
Pressure regulation range	0.01 MPa...1 MPa 0.1 bar...10 bar
Inlet pressure 1	0 bar...11 bar 0 MPa...1.1 MPa
Max. pressure hysteresis	0.05 bar
Standard nominal flow rate (standardised to DIN 1343)	7000 l/min
Operational voltage range DC	21.6 V...26.4 V
Max. current consumption	500 mA
Duty cycle	100%
Max. electrical power consumption	12 W
Residual ripple	10 %
Switching output	NPN
Signal range analogue output	4 - 20 mA
Signal range analogue input	4 - 20 mA
Operating medium	Compressed air to ISO 8573-1:2010 [7:4:4] Inert gases
Note on operating and pilot medium	Lubricated operation not possible
Approval	RCM trademark c UL us listed (OL)

Feature	Value
KC mark	KC-EMV
CE mark (see declaration of conformity)	To EU EMC Directive In accordance with EU RoHS Directive
UKCA marking (see declaration of conformity)	To UK instructions for EMC To UK RoHS instructions
Certificate issuing authority	UL E322346
Corrosion resistance class CRC	2 - Moderate corrosion stress
LABS (PWIS) conformity	VDMA24364-B1/B2-L
Media temperature	10 °C...50 °C
Degree of protection	IP65
Ambient temperature	0 °C...60 °C
Product weight	2050 g
Linearity	1 %FS
Hysteresis	0.5 %FS
Reproducibility	0.5 %FS
Total accuracy	1.25%FS
Temperature coefficient	0.04 %/K
Repetition accuracy FS	0.5 %
Electrical connection	8-pin M12 Plugs
Type of mounting	With through-hole With accessories Either:
Pneumatic connection, port 1	G1/2
Pneumatic connection, port 2	G1/2
Pneumatic connection, port 3	G1/2
Note on materials	RoHS-compliant
Material housing	Wrought aluminium alloy Anodised