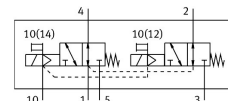
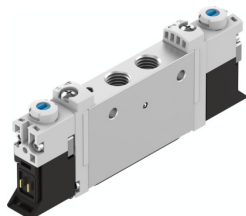


Solenoid valve VUVG-L10-T32U-MZT-M7-1P3

Part number: 574361

FESTO



Data sheet

Feature	Value
Valve function	2x3/2-way, open, monostable
Type of actuation	Electric
Valve size	10 mm
Standard nominal flow rate (standardised to DIN 1343)	155 l/min
pneumatic working port	M7
Operating voltage	24V DC
Operating pressure	-0.09 MPa...1 MPa -0.9 bar...10 bar
Design	Piston gate valve
Type of reset	Mechanical spring
Approval	RCM trademark c UL us - Recognized (OL)
Degree of protection	IP40 IP65 With plug socket
Nominal size	1.9 mm
Exhaust-air function	With flow control option
Sealing principle	Soft
Mounting position	optional
Manual override	Detenting Non-detenting Covered
Type of piloting	Pilot actuated
Pilot air supply	External
lap	Overlap
Pilot pressure	0.2 MPa...0.8 MPa 2 bar...8 bar
Suitability for vacuum	yes
Switching time off	11 ms
Switching time on	8 ms
Duty cycle	100%
Max. positive test pulse with 0 signal	700 µs
Max. negative test pulse with 1 signal	900 µs

Feature	Value
Characteristic coil data	24 V DC: 1.0 W 24 V DC: low-current phase 0.3 W, high-current phase 1.0 W
Permissible voltage fluctuations	+/- 10 %
Operating medium	Compressed air to ISO 8573-1:2010 [7:4:4]
Note on operating and pilot medium	Lubricated operation possible (in which case lubricated operation will always be required)
Vibration resistance	Transport application test with severity level 2 to FN 942017-4 and EN 60068-2-6
Restrictions for environmental and media temperature	-5 ... 50° C Without holding current reduction
Shock resistance	Shock test with severity level 2 to FN 942017-5 and EN 60068-2-27
Corrosion resistance class CRC	2 - Moderate corrosion stress
LABS (PWIS) conformity	VDMA24364-B1/B2-L
Cleanroom class	Class 5 according to ISO 14644-1
Media temperature	-5 °C...60 °C
Pilot medium	Compressed air to ISO 8573-1:2010 [7:4:4]
Ambient temperature	-5 °C...60 °C
Product weight	54 g
Electrical connection	Via electrical sub-base
Type of mounting	On manifold rail With through-hole Either:
Pilot air port 12/14	M3
Pneumatic connection, port 1	M7
Pneumatic connection, port 2	M7
Pneumatic connection, port 4	M7
Pneumatic connection, port 5	M7
Note on materials	RoHS-compliant
Material seals	HNBR NBR
Material housing	Wrought aluminium alloy