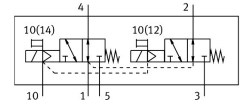
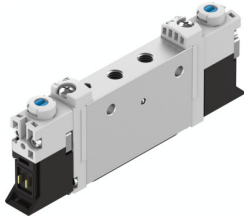


# Solenoid valve VUVG-L10-T32U-MZT-M5-1P3

Part number: 574353

**FESTO**



## Data sheet

| Feature   | Value                                      |
|---|--|
| Valve function  | 2x3/2-way, open, monostable                |
| Type of actuation                                     | Electric                                   |
| Valve size  | 10 mm                                      |
| Standard nominal flow rate (standardised to DIN 1343) | 135 l/min                                  |
| pneumatic working port                                | M5   |
| Operating voltage                                     | 24V DC                                     |
| Operating pressure                                    | -0.09 MPa...1 MPa<br>-0.9 bar...10 bar     |
| Design  | Piston gate valve                          |
| Type of reset   | Mechanical spring                          |
| Approval  | RCM trademark<br>c UL us - Recognized (OL) |
| Degree of protection                                  | IP40<br>IP65<br>With plug socket           |
| Nominal size  | 1.8 mm                                     |
| Exhaust-air function                                  | With flow control option                   |
| Sealing principle                                     | Soft                                       |
| Mounting position                                     | optional                                   |
| Manual override                                       | Detenting<br>Non-detenting<br>Covered      |
| Type of piloting                                      | Pilot actuated                             |
| Pilot air supply                                      | External                                   |
| lap   | Overlap                                    |
| Pilot pressure  | 0.2 MPa...0.8 MPa<br>2 bar...8 bar         |
| Suitability for vacuum                                | yes  |
| Switching time off                                    | 11 ms                                      |
| Switching time on                                     | 8 ms                                       |
| Duty cycle  | 100%                                       |
| Max. positive test pulse with 0 signal                | 700 µs                                     |
| Max. negative test pulse with 1 signal                | 900 µs                                     |

| Feature  | Value  |
|--|--|
| Characteristic coil data                             | 24 V DC: 1.0 W<br>24 V DC: low-current phase 0.3 W, high-current phase 1.0 W               |
| Permissible voltage fluctuations                     | +/- 10 %   |
| Operating medium                                     | Compressed air to ISO 8573-1:2010 [7:4:4]  |
| Note on operating and pilot medium                   | Lubricated operation possible (in which case lubricated operation will always be required) |
| Vibration resistance                                 | Transport application test with severity level 2 to FN 942017-4 and EN 60068-2-6           |
| Restrictions for environmental and media temperature | -5 ... 50° C<br>Without holding current reduction  |
| Shock resistance                                     | Shock test with severity level 2 to FN 942017-5 and EN 60068-2-27                          |
| Corrosion resistance class CRC                       | 2 - Moderate corrosion stress  |
| LABS (PWIS) conformity                               | VDMA24364-B1/B2-L  |
| Cleanroom class                                      | Class 5 according to ISO 14644-1   |
| Media temperature                                    | -5 °C...60 °C  |
| Pilot medium   | Compressed air to ISO 8573-1:2010 [7:4:4]  |
| Ambient temperature                                  | -5 °C...60 °C  |
| Product weight                                       | 54 g   |
| Electrical connection                                | Via electrical sub-base  |
| Type of mounting                                     | On manifold rail<br>With through-hole<br>Either:   |
| Pilot air port 12/14                                 | M3   |
| Pneumatic connection, port 1                         | M5   |
| Pneumatic connection, port 2                         | M5   |
| Pneumatic connection, port 4                         | M5   |
| Pneumatic connection, port 5                         | M5   |
| Note on materials                                    | RoHS-compliant   |
| Material seals                                       | HNBR<br>NBR  |
| Material housing                                     | Wrought aluminium alloy  |