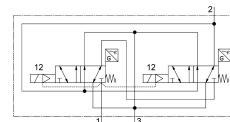
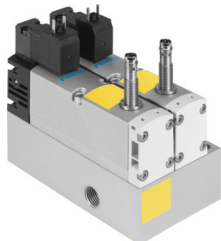


Control block VOFA-L26-T32C-M-G14-1C1-ANP

Part number: 574012

FESTO



Data sheet

Feature	Value
Valve function	3/2-way, closed, monostable
Type of actuation	Electric
Construction width	65 mm
Standard nominal flow rate (standardised to DIN 1343)	1050 l/min
pneumatic working port	G1/4
Operating voltage	24V DC
Operating pressure	0.3 MPa...1 MPa 3 bar...10 bar 43.5 psi...145 psi
Design	Piston gate valve
Type of reset	Mechanical spring
Degree of protection	IP65 NEMA 4
Approval	c UL us - Recognized (OL)
KC mark	KC-EMV
CE mark (see declaration of conformity)	To EU EMC Directive To EC Machinery Directive
UKCA marking (see declaration of conformity)	To UK instructions for EMC To UK regulations for machines
Certificate issuing authority	UL MH19482
Exhaust-air function	With flow control option
Sealing principle	Soft
Mounting position	optional
Conforms to standard	EN 60947-5-2
Manual override	None
Type of piloting	Pilot actuated
Pilot air supply	Internal
Flow direction	Non-reversible
Measuring principle	Inductive
lap	Overlap
Reverse polarity protection sensor	For all electrical connections
Safety function	Exhaust Protection against manipulation, prevention of unexpected start-up

Feature	Value
Performance Level (PL)	Exhausting/up to category 4, performance level e Protection against manipulation, prevention of unexpected start-up/up to category 4, Performance Level e
Note on forced dynamization	Switching frequency min. 1/week
Signal status display	With accessories
Switching position sensing	Normal position via sensor
Switching status display sensor	LED
Pilot pressure	0.3 MPa...1 MPa 3 bar...10 bar
Suitability for vacuum	no
Standard nominal flow rate, exhaust 0.6->0 MPa (6->0 bar, 87->0 psi)	2650 l/min
Standard flow rate exhaust 0.6->0 MPa (6->0 bar, 87->0 psi) in case of error	1050 l/min
Switching time off	54 ms
Switching time on	24 ms
Valve - sensor switching time on	58 ms
Valve - sensor switching time off	11 ms
Duty cycle	100%
Max. positive test pulse with 0 signal	1000 µs
Max. negative test pulse with 1 signal	800 µs
Switching output	NPN
Characteristic coil data	24 V DC: 1.8 W
Permissible voltage fluctuations	-15%/+10%
Operating medium	Compressed air to ISO 8573-1:2010 [7:4:4]
Note on operating and pilot medium	Lubricated operation possible (in which case lubricated operation will always be required)
Vibration resistance	Transport application test with severity level 2 to FN 942017-4 and EN 60068-2-6
Shock resistance	Shock test with severity level 2 to FN 942017-5 and EN 60068-2-27
Corrosion resistance class CRC	0 - No corrosion stress
LABS (PWIS) conformity	VDMA24364-B1/B2-L
Max. magnetic interference field	60 mT
Media temperature	-5 °C...50 °C
Sound pressure level	85 dB(A)
Protection against direct and indirect contact	PELV Protection class to EN60950/IEC 950
Pilot medium	Compressed air to ISO 8573-1:2010 [7:4:4]
Ambient temperature	-5 °C...50 °C
Nominal altitude of use	1000 m in accordance with VDE 0580
Product weight	1134 g
Operating voltage range, DC sensor	10 V...30 V
Short-circuit strength sensor	Pulsed
Idle current sensor	10 mA
Max. output current sensor	200 mA
Max. switching frequency sensor	5000 Hz
Residual ripple sensor	± 10%
Voltage drop sensor	2 V
Electrical connection	Type C To EN 175301-803 Without protective earth conductor
Sensor connection	Plug 3-pin M8x1
Type of mounting	With through-hole
Pneumatic connection, port 1	G1/4
Pneumatic connection, port 2	G1/4

Feature	Value
Pneumatic connection, port 3	G1/4
Note on materials	RoHS-compliant
Material seals	FPM HNBR NBR
Material housing	Die-cast aluminium PA
Material screws	Galvanised steel
Switching element function	N/C contact