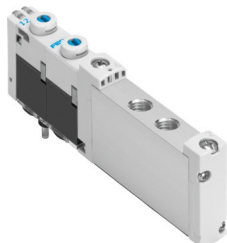


# Solenoid valve

## VUVG-S10-P53E-ZT-M7-1T1L

Part number: 573408

**FESTO**



## Data sheet

| Feature                                               | Value                                  |
|-------------------------------------------------------|----------------------------------------|
| Valve function                                        | 5/3 exhausted                          |
| Type of actuation                                     | Electric                               |
| Valve size                                            | 10 mm                                  |
| Standard nominal flow rate (standardised to DIN 1343) | 280 l/min                              |
| pneumatic working port                                | M7                                     |
| Operating voltage                                     | 24V DC                                 |
| Operating pressure                                    | -0.09 MPa...1 MPa<br>-0.9 bar...10 bar |
| Design                                                | Piston gate valve                      |
| Type of reset                                         | Mechanical spring                      |
| Approval                                              | c UL us - Recognized (OL)              |
| Degree of protection                                  | IP65<br>IP67                           |
| Exhaust-air function                                  | With flow control option               |
| Sealing principle                                     | Soft                                   |
| Mounting position                                     | optional                               |
| Manual override                                       | Detenting<br>Non-detenting             |
| Type of piloting                                      | Pilot actuated                         |
| Pilot air supply                                      | External                               |
| Flow direction                                        | Reversible                             |
| lap                                                   | Indefinite overlap                     |
| Signal status display                                 | LED                                    |
| Pilot pressure                                        | 0.3 MPa...0.8 MPa<br>3 bar...8 bar     |
| Max. switching frequency                              | 3 Hz                                   |
| Switching time off                                    | 38 ms                                  |
| Switching time on                                     | 12 ms                                  |
| Switching time reversal                               | 16 ms                                  |
| Duty cycle                                            | 100%                                   |
| Max. positive test pulse with 0 signal                | 1600 µs                                |
| Max. negative test pulse with 1 signal                | 3000 µs                                |

| Feature                            | Value                                                                                      |
|------------------------------------|--------------------------------------------------------------------------------------------|
| Characteristic coil data           | 22 V DC: 1.0 W                                                                             |
| Permissible voltage fluctuations   | +/- 10 %                                                                                   |
| Operating medium                   | Compressed air to ISO 8573-1:2010 [7:4:4]                                                  |
| Note on operating and pilot medium | Lubricated operation possible (in which case lubricated operation will always be required) |
| Vibration resistance               | Transport application test with severity level 2 to FN 942017-4 and EN 60068-2-6           |
| Shock resistance                   | Shock test with severity level 2 to FN 942017-5 and EN 60068-2-27                          |
| Corrosion resistance class CRC     | 2 - Moderate corrosion stress                                                              |
| LABS (PWIS) conformity             | VDMA24364-B1/B2-L                                                                          |
| Media temperature                  | -5 °C...60 °C                                                                              |
| Pilot medium                       | Compressed air to ISO 8573-1:2010 [7:4:4]                                                  |
| Ambient temperature                | -5 °C...60 °C                                                                              |
| Product weight                     | 58 g                                                                                       |
| Electrical connection              | Via sub-base                                                                               |
| Type of mounting                   | On manifold rail                                                                           |
| Pneumatic connection, port 2       | M7                                                                                         |
| Pneumatic connection, port 4       | M7                                                                                         |
| Note on materials                  | RoHS-compliant                                                                             |
| Material seals                     | HNBR<br>NBR                                                                                |
| Material housing                   | Wrought aluminium alloy                                                                    |