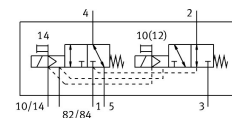
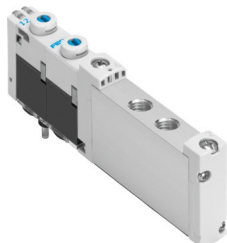


Solenoid valve

VUVG-S10-T32H-MZT-M7-1T1L

Part number: 573403

FESTO



Data sheet

| Feature | Value |
|---|--|
| Valve function | 2x3/2-way, open/closed, monostable |
| Type of actuation | Electric |
| Valve size | 10 mm |
| Standard nominal flow rate (standardised to DIN 1343) | 140 l/min |
| pneumatic working port | M7 |
| Operating voltage | 24V DC |
| Operating pressure | -0.09 MPa...1 MPa -0.9 bar...10 bar |
| Design | Piston gate valve |
| Type of reset | Mechanical spring |
| Approval | c UL us - Recognized (OL) |
| Degree of protection | IP65 IP67 |
| Exhaust-air function | With flow control option |
| Sealing principle | Soft |
| Mounting position | optional |
| Manual override | Detenting Non-detenting |
| Type of piloting | Pilot actuated |
| Pilot air supply | External |
| Flow direction | Reversible |
| lap | Overlap |
| Signal status display | LED |
| Pilot pressure | 0.2 MPa...0.8 MPa 2 bar...8 bar |
| Max. switching frequency | 3 Hz |
| Switching time off | 20 ms |
| Switching time on | 10 ms |
| Duty cycle | 100% |
| Max. positive test pulse with 0 signal | 1600 µs |
| Max. negative test pulse with 1 signal | 3000 µs |
| Characteristic coil data | 22 V DC: 1.0 W |

| Feature | Value |
|------------------------------------|--|
| Permissible voltage fluctuations | +/- 10 % |
| Operating medium | Compressed air to ISO 8573-1:2010 [7:4:4] |
| Note on operating and pilot medium | Lubricated operation possible (in which case lubricated operation will always be required) |
| Vibration resistance | Transport application test with severity level 2 to FN 942017-4 and EN 60068-2-6 |
| Shock resistance | Shock test with severity level 2 to FN 942017-5 and EN 60068-2-27 |
| Corrosion resistance class CRC | 2 - Moderate corrosion stress |
| LABS (PWIS) conformity | VDMA24364-B1/B2-L |
| Media temperature | -5 °C...60 °C |
| Pilot medium | Compressed air to ISO 8573-1:2010 [7:4:4] |
| Ambient temperature | -5 °C...60 °C |
| Product weight | 59 g |
| Electrical connection | Via sub-base |
| Type of mounting | On manifold rail |
| Pneumatic connection, port 2 | M7 |
| Pneumatic connection, port 4 | M7 |
| Note on materials | RoHS-compliant |
| Material seals | HNBR NBR |
| Material housing | Wrought aluminium alloy |