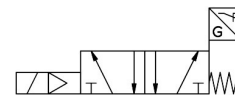


# Solenoid valve

## VSVA-B-M52-MZD-A2-1T1L-APX-0.5

Part number: 573201

**FESTO**



## Data sheet

| Feature   | Value   |
|---|---|
| Valve function  | 5/2-way, monostable   |
| Type of actuation                                     | Electric  |
| Construction width                                    | 18 mm   |
| Standard nominal flow rate (standardised to DIN 1343) | 550 l/min   |
| pneumatic working port                                | Sub-base size 18 mm to ISO 15407-2<br>G1/8                                |
| Operating voltage                                     | 24V DC  |
| Operating pressure                                    | -0.09 MPa...1 MPa<br>-0.9 bar...10 bar                                    |
| Design  | Piston gate valve   |
| Type of reset   | Mechanical spring   |
| KC mark   | KC-EMV  |
| CE mark (see declaration of conformity)               | To EU EMC Directive   |
| UKCA marking (see declaration of conformity)          | To UK instructions for EMC  |
| Degree of protection                                  | IP65<br>NEMA 4  |
| Nominal size  | 5 mm  |
| Exhaust-air function                                  | With flow control option<br>Via throttle plate<br>Via individual sub-base |
| Sealing principle                                     | Soft  |
| Mounting position                                     | optional  |
| Manual override                                       | Detenting<br>Non-detenting<br>Covered                                     |
| Type of piloting                                      | Pilot actuated  |
| Pilot air supply                                      | External<br>Internal  |
| Flow direction  | Non-reversible  |
| Measuring principle                                   | Inductive   |
| lap   | Overlap   |
| Reverse polarity protection sensor                    | For all electrical connections  |
| Signal status display                                 | LED   |
| Switching position sensing                            | Normal position via sensor  |

| Feature   | Value  |
|---|--|
| Switching status display sensor                       | LED  |
| Pilot pressure  | 0.3 MPa...1 MPa<br>3 bar...10 bar  |
| Flow rate of valve                                    | 750 l/min  |
| Flow rate of valve on individual sub-base             | 600 l/min  |
| Valve flow rate, pneumatically linked, flow optimized | 700 l/min  |
| Flow rate of pneumatically interlinked valve          | 550 l/min  |
| Switching time off                                    | 38 ms  |
| Switching time on                                     | 12 ms  |
| Valve - sensor switching time on                      | 32 ms  |
| Valve - sensor switching time off                     | 9 ms   |
| Duty cycle  | 100%   |
| Max. positive test pulse with 0 signal                | 1500 µs  |
| Max. negative test pulse with 1 signal                | 800 µs   |
| Nominal operating voltage DC                          | 24 V   |
| Switching output                                      | PNP  |
| Characteristic coil data                              | 24 V DC: 1.6 W   |
| Immunity to surge                                     | 2.5 kV   |
| Pollution degree                                      | 3  |
| Permissible voltage fluctuations                      | +/- 10 %   |
| Operating medium                                      | Compressed air to ISO 8573-1:2010 [7:4:4]  |
| Note on operating and pilot medium                    | Lubricated operation possible (in which case lubricated operation will always be required) |
| Vibration resistance                                  | Transport application test with severity level 2 to FN 942017-4 and EN 60068-2-6           |
| Shock resistance                                      | Shock test with severity level 2 to FN 942017-5 and EN 60068-2-27                          |
| Corrosion resistance class CRC                        | 0 - No corrosion stress  |
| LABS (PWIS) conformity                                | VDMA24364-B1/B2-L  |
| Media temperature                                     | -5 °C...50 °C  |
| Relative air humidity                                 | 0 - 90%  |
| Sound pressure level                                  | 85 dB(A)   |
| Ambient temperature                                   | -5 °C...50 °C  |
| Max. tightening torque for valve mounting             | 0.8 Nm...1.2 Nm  |
| Product weight  | 157 g  |
| Operating voltage range, DC sensor                    | 10 V...30 V  |
| Short-circuit strength sensor                         | Pulsed   |
| Idle current sensor                                   | 10 mA  |
| Max. output current sensor                            | 200 mA   |
| Max. switching frequency sensor                       | 5000 Hz  |
| Residual ripple sensor                                | ± 10%  |
| Voltage drop sensor                                   | 2 V  |
| Electrical connection                                 | 4-pin<br>Plugs<br>To ISO 15407-2   |
| Sensor connection                                     | Plug<br>Cable<br>4-pin<br>M12x1<br>0.5 m   |
| Type of mounting                                      | On sub-base  |
| Pilot air port 12/14                                  | Sub-base size 18 mm to ISO 15407-2   |
| Pilot exhaust port 82/84                              | Ducted<br>Not ducted<br>Either:  |
| Pneumatic connection, port 1                          | Sub-base size 18 mm to ISO 15407-2   |
| Pneumatic connection, port 2                          | Sub-base size 18 mm to ISO 15407-2   |

| Feature                      | Value                              |
|------------------------------|------------------------------------|
| Pneumatic connection, port 3 | Sub-base size 18 mm to ISO 15407-2 |
| Pneumatic connection, port 4 | Sub-base size 18 mm to ISO 15407-2 |
| Pneumatic connection, port 5 | Sub-base size 18 mm to ISO 15407-2 |
| Note on materials            | RoHS-compliant                     |
| Material seals               | FPM<br>NBR                         |
| Material housing             | Die-cast aluminium<br>PA           |
| Material screws              | Galvanised steel                   |
| Switching element function   | N/C contact                        |