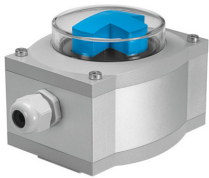


# Sensorbox

## SRAP-M-CA1-GR270-1-A-TP20

Part number: 568239

**FESTO**



## Data sheet

| Feature                                      | Value   |
|--|---|
| Design                                       | Angular   |
| Based on standard                            | VDI/VDE 3845 (NAMUR)  |
| Approval                                     | RCM trademark<br>c UL us - Recognized (OL)                  |
| CE mark (see declaration of conformity)      | To EU EMC Directive<br>In accordance with EU RoHS Directive |
| UKCA marking (see declaration of conformity) | To UK instructions for EMC<br>To UK RoHS instructions       |
| Note on materials                            | RoHS-compliant  |
| Measured variable                            | Rotation angle  |
| Measuring principle                          | Magnetic Hall   |
| Ambient temperature                          | -20 °C...80 °C  |
| Analogue output                              | 4 - 20 mA   |
| Repetition accuracy analogue output in ± °   | 1 deg   |
| Short circuit current rating                 | yes   |
| Overload protection                          | Available   |
| Operational voltage range DC                 | 15 V...30 V   |
| No-load supply current                       | 12 mA...20 mA   |
| Reverse polarity protection                  | For all electrical connections                              |
| Electrical connection                        | 9-pin<br>Screw terminal<br>Plug-in                          |
| Connectable nominal cross section conductor  | 2.5 mm <sup>2</sup>   |
| Cable fitting                                | M20   |
| Permissible cable diameter                   | 5 mm...13 mm  |
| Max. cable length                            | 30 m  |
| Mounting position                            | optional  |
| Product weight                               | 1000 g  |
| Material housing                             | Wrought aluminium alloy                                     |
| Position indicator                           | Red/green   |
| Setting options                              | Teach-in<br>Teach-in via electrical connection              |
| Setting range of angular detection           | 0 deg...270 deg   |

| Feature                        | Value                     |
|--------------------------------|---------------------------|
| Degree of protection           | IP65                      |
| Insulation voltage             | 50 V                      |
| Immunity to surge              | 0.8 kV                    |
| Protection class               | III                       |
| Corrosion resistance class CRC | 3 - high corrosion stress |
| LABS (PWIS) conformity         | VDMA24364-B2-L            |
| Pollution degree               | 3                         |