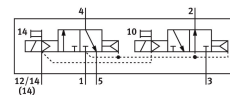
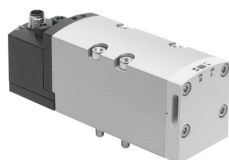


# Solenoid valve

## VSVA-B-T32H-AZD-D2-1R5L

Part number: 567002

**FESTO**



## Data sheet

| Feature   | Value   |
|---|---|
| Valve function  | 2x3/2-way, open/closed, monostable  |
| Type of actuation                                     | Electric  |
| Construction width                                    | 52 mm   |
| Standard nominal flow rate (standardised to DIN 1343) | 2200 l/min  |
| pneumatic working port                                | Sub-base size 2 to ISO 5599-1<br>G3/8                                     |
| Operating voltage                                     | 24V DC  |
| Operating pressure                                    | 0.3 MPa...1 MPa<br>3 bar...10 bar   |
| Design  | Piston gate valve   |
| Type of reset   | Pneumatic spring  |
| Approval  | C-Tick<br>c CSA us (OL)<br>c UL us - Recognized (OL)                      |
| KC mark   | KC-EMV  |
| CE mark (see declaration of conformity)               | To EU EMC Directive   |
| UKCA marking (see declaration of conformity)          | To UK instructions for EMC<br>To UK RoHS instructions                     |
| Degree of protection                                  | IP65<br>NEMA 4  |
| Nominal size  | 15 mm   |
| Grid dimension  | 59 mm   |
| Exhaust-air function                                  | With flow control option<br>Via throttle plate<br>Via individual sub-base |
| Sealing principle                                     | Soft  |
| Mounting position                                     | optional  |
| Conforms to standard                                  | ISO 5599-1  |
| Manual override                                       | Detenting<br>Non-detenting  |
| Type of piloting                                      | Pilot actuated  |
| Pilot air supply                                      | External  |
| Flow direction  | Non-reversible  |
| lap   | Overlap   |

| Feature                                      | Value  |
|--|--|
| Signal status display                        | LED  |
| Pilot pressure                               | 0.3 MPa...1 MPa<br>3 bar...10 bar  |
| Flow rate of valve                           | 3000 l/min   |
| Flow rate of valve on individual sub-base    | 2000 l/min   |
| Flow rate of pneumatically interlinked valve | 2200 l/min   |
| Switching time off                           | 35 ms  |
| Switching time on                            | 20 ms  |
| Duty cycle                                   | 100%   |
| Max. positive test pulse with 0 signal       | 1000 µs  |
| Max. negative test pulse with 1 signal       | 3500 µs  |
| Nominal pick-up current per solenoid coil    | 165 mA up to 30 ms   |
| Nominal current with current reduction       | 35 mA after 30 ms  |
| Characteristic coil data                     | 24 V DC: 4.6 W   |
| Permissible voltage fluctuations             | +/- 10 %   |
| Operating medium                             | Compressed air to ISO 8573-1:2010 [7:4:4]  |
| Note on operating and pilot medium           | Lubricated operation possible (in which case lubricated operation will always be required) |
| Vibration resistance                         | Transport application test with severity level 2 to FN 942017-4 and EN 60068-2-6           |
| Shock resistance                             | Shock test with severity level 2 to FN 942017-5 and EN 60068-2-27                          |
| Corrosion resistance class CRC               | 0 - No corrosion stress  |
| LABS (PWIS) conformity                       | VDMA24364-B1/B2-L  |
| Media temperature                            | -5 °C...50 °C  |
| Relative air humidity                        | 0 - 90%  |
| Pilot medium                                 | Compressed air to ISO 8573-1:2010 [7:4:4]  |
| Ambient temperature                          | -5 °C...50 °C  |
| Product weight                               | 740 g  |
| Electrical connection                        | 3-pin<br>M12x1<br>Central plug<br>Round design   |
| Type of mounting                             | On sub-base  |
| Pilot air port 12/14                         | Sub-base size 2 to ISO 5599-1  |
| Pilot exhaust port 82/84                     | Ducted<br>Not ducted as per standard<br>Either:  |
| Pneumatic connection, port 1                 | Sub-base size 2 to ISO 5599-1  |
| Pneumatic connection, port 2                 | Sub-base size 2 to ISO 5599-1  |
| Pneumatic connection, port 3                 | Sub-base size 2 to ISO 5599-1  |
| Pneumatic connection, port 4                 | Sub-base size 2 to ISO 5599-1  |
| Pneumatic connection, port 5                 | Sub-base size 2 to ISO 5599-1  |
| Note on materials                            | RoHS-compliant   |
| Material seals                               | FPM<br>HNBR<br>NBR   |
| Material housing                             | Die-cast aluminium<br>PA   |
| Material screws                              | Steel<br>Galvanised  |