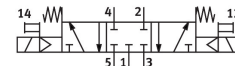
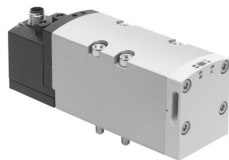


Solenoid valve VSVA-B-P53C-D-D2-1R5L

Part number: 566997

FESTO



Data sheet

| Feature | Value |
|-------------------------------------------------------|---------------------------------------------------------------------------|
| Valve function | 5/3 closed |
| Type of actuation | Electric |
| Construction width | 52 mm |
| Standard nominal flow rate (standardised to DIN 1343) | 2700 l/min |
| pneumatic working port | Sub-base size 2 to ISO 5599-1 G3/8 |
| Operating voltage | 24V DC |
| Operating pressure | 0.3 MPa...1 MPa 3 bar...10 bar |
| Design | Piston gate valve |
| Approval | C-Tick c CSA us (OL) c UL us - Recognized (OL) |
| KC mark | KC-EMV |
| CE mark (see declaration of conformity) | To EU EMC Directive |
| UKCA marking (see declaration of conformity) | To UK instructions for EMC To UK RoHS instructions |
| Degree of protection | IP65 NEMA 4 |
| Nominal size | 15 mm |
| Grid dimension | 59 mm |
| Exhaust-air function | With flow control option Via throttle plate Via individual sub-base |
| Sealing principle | Soft |
| Mounting position | optional |
| Conforms to standard | ISO 5599-1 |
| Manual override | Detenting Non-detenting |
| Type of piloting | Pilot actuated |
| Pilot air supply | Internal |
| Flow direction | Non-reversible |
| lap | Overlap |
| Signal status display | LED |

| Feature | Value |
|----------------------------------------------|--------------------------------------------------------------------------------------------|
| Flow rate of valve | 3600 l/min |
| Flow rate of valve on individual sub-base | 2300 l/min |
| Flow rate of pneumatically interlinked valve | 2700 l/min |
| Switching time off | 60 ms |
| Switching time on | 23 ms |
| Duty cycle | 100% |
| Max. positive test pulse with 0 signal | 1000 µs |
| Max. negative test pulse with 1 signal | 3500 µs |
| Nominal pick-up current per solenoid coil | 165 mA up to 30 ms |
| Nominal current with current reduction | 35 mA after 30 ms |
| Characteristic coil data | 24 V DC: 4.6 W |
| Permissible voltage fluctuations | +/- 10 % |
| Operating medium | Compressed air to ISO 8573-1:2010 [7:4:4] |
| Note on operating and pilot medium | Lubricated operation possible (in which case lubricated operation will always be required) |
| Vibration resistance | Transport application test with severity level 2 to FN 942017-4 and EN 60068-2-6 |
| Shock resistance | Shock test with severity level 2 to FN 942017-5 and EN 60068-2-27 |
| Corrosion resistance class CRC | 0 - No corrosion stress |
| LABS (PWIS) conformity | VDMA24364-B1/B2-L |
| Media temperature | -5 °C...50 °C |
| Relative air humidity | 0 - 90% |
| Pilot medium | Compressed air to ISO 8573-1:2010 [7:4:4] |
| Ambient temperature | -5 °C...50 °C |
| Product weight | 780 g |
| Electrical connection | 3-pin M12x1 Central plug Round design |
| Type of mounting | On sub-base |
| Pneumatic connection, port 1 | Sub-base size 2 to ISO 5599-1 |
| Pneumatic connection, port 2 | Sub-base size 2 to ISO 5599-1 |
| Pneumatic connection, port 3 | Sub-base size 2 to ISO 5599-1 |
| Pneumatic connection, port 4 | Sub-base size 2 to ISO 5599-1 |
| Pneumatic connection, port 5 | Sub-base size 2 to ISO 5599-1 |
| Note on materials | RoHS-compliant |
| Material seals | FPM HNBR NBR |
| Material housing | Die-cast aluminium PA |
| Material screws | Steel Galvanised |