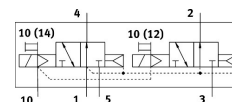
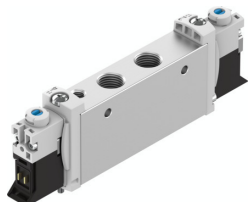


# Solenoid valve VUVG-L14-T32U-AZT-G18-1P3

Part number: 566506

**FESTO**



## Data sheet

Feature	Value
Valve function	2x3/2-way, open, monostable
Type of actuation	Electric
Valve size	14 mm
Standard nominal flow rate (standardised to DIN 1343)	580 l/min...600 l/min
pneumatic working port	G1/8
Operating voltage	24V DC
Operating pressure	0.15 MPa...1 MPa 1.5 bar...10 bar
Design	Piston gate valve
Type of reset	Pneumatic spring
Approval	RCM trademark c UL us - Recognized (OL)
Degree of protection	IP40 IP65 With plug socket
Nominal size	4.6 mm
Exhaust-air function	With flow control option
Sealing principle	Soft
Mounting position	optional
Manual override	Detenting Non-detenting Covered
Type of piloting	Pilot actuated
Pilot air supply	External
lap	Overlap
Pilot pressure	0.15 MPa...0.8 MPa 1.5 bar...8 bar
Suitability for vacuum	no
Switching time off	25 ms
Switching time on	9 ms
Duty cycle	100%
Max. positive test pulse with 0 signal	700 µs
Max. negative test pulse with 1 signal	900 µs

Feature	Value
Characteristic coil data	24 V DC: 1.0 W 24 V DC: low-current phase 0.3 W, high-current phase 1.0 W
Permissible voltage fluctuations	+/- 10 %
Operating medium	Compressed air to ISO 8573-1:2010 [7:4:4]
Note on operating and pilot medium	Lubricated operation possible (in which case lubricated operation will always be required)
Vibration resistance	Transport application test with severity level 2 to FN 942017-4 and EN 60068-2-6
Restrictions for environmental and media temperature	-5 ... 50° C Without holding current reduction
Shock resistance	Shock test with severity level 2 to FN 942017-5 and EN 60068-2-27
Corrosion resistance class CRC	2 - Moderate corrosion stress
LABS (PWIS) conformity	VDMA24364-B1/B2-L
Cleanroom class	Class 5 according to ISO 14644-1
Media temperature	-5 °C...60 °C
Pilot medium	Compressed air to ISO 8573-1:2010 [7:4:4]
Ambient temperature	-5 °C...60 °C
Product weight	89 g
Electrical connection	Via electrical sub-base
Type of mounting	On manifold rail With through-hole Either:
Pilot air port 12/14	M5
Pneumatic connection, port 1	G1/8
Pneumatic connection, port 2	G1/8
Pneumatic connection, port 3	G1/8
Pneumatic connection, port 4	G1/8
Pneumatic connection, port 5	G1/8
Note on materials	RoHS-compliant
Material seals	HNBR NBR
Material housing	Wrought aluminium alloy