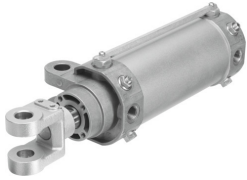


Hinge cylinder DW-80-50-Y-A-G

Part number: 565798

FESTO



Data sheet

| Feature | Value |
|--|--|
| Stroke | 50 mm |
| Piston diameter | 80 mm |
| Piston rod thread | M20x1.5 |
| Broad rod clevis/swivel mounting | 28 mm |
| Cushioning | Pneumatic cushioning, adjustable at both ends |
| Mounting position | optional |
| Design | Piston Piston rod with rod clevis Swivel mounting on bearing cap Cylinder barrel |
| Speed regulation | Integrated flow control at both ends |
| Position detection | Via proximity switch |
| Piston-rod end | Male thread with rod clevis |
| Operating pressure | 1 bar...10 bar |
| Mode of operation | Double-acting |
| Operating medium | Compressed air to ISO 8573-1:2010 [7:4:4] |
| Note on operating and pilot medium | Lubricated operation possible (in which case lubricated operation will always be required) |
| Corrosion resistance class CRC | 0 - No corrosion stress |
| LABS (PWIS) conformity | VDMA24364-B2-L |
| Ambient temperature | -10 °C...60 °C |
| Impact energy in end positions | 1.8 J |
| Cushioning length | 30 mm |
| Theoretical force at 0.6 MPa (6 bar, 87 psi), return stroke | 2721 N |
| Theoretical force at 0.6 MPa (6 bar, 87 psi), advance stroke | 3016 N |
| Moving mass for 0 mm stroke | 1651 g |
| Additional moving mass per 10 mm stroke | 39 g |
| Basic weight for 0 mm stroke | 4185 g |
| Additional weight per 10 mm stroke | 65 g |
| alternative connections | See product drawing |
| Type of mounting | Via swivel mounting on bearing cap With accessories |
| Pneumatic connection | G3/8 |

| Feature | Value |
|--------------------------|--------------------------------------|
| Material rod clevis | Cast steel Tempered steel |
| Note on materials | RoHS-compliant |
| Material wiper | Bronze |
| Material cover | Die-cast aluminium Anodised |
| Material seals | NBR |
| Material piston rod | Tempered steel Hard-chrome-plated |
| Material cylinder barrel | Wrought aluminium alloy Anodised |