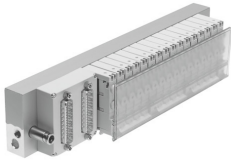


# Valve terminal VTOC

Part number: 564056

**FESTO**



## Data sheet

| Feature                                   | Value  |
|---|--|
| Valve function                            | 2x3/2-way, monostable, closed  |
| Valve size                                | 10 mm  |
| Max. standard nominal flow rate           | 10 l/min at 10 mm  |
| pneumatic working port                    | Sub-base   |
| Operating pressure                        | 0 MPa...0.8 MPa<br>0 bar...8 bar<br>0 psi...116 psi  |
| Approval                                  | c UL us - Recognized (OL)  |
| KC mark                                   | KC-EMV   |
| CE mark (see declaration of conformity)   | To EU EMC Directive  |
| Signal status display                     | LED  |
| Suitability for vacuum                    | no   |
| Inrush time                               | 100 ms   |
| Nominal pick-up current per solenoid coil | 55 mA to 100 ms  |
| Nominal current with current reduction    | 13 mA after 100 ms   |
| Nominal operating voltage DC              | 24 V   |
| Permissible voltage fluctuations          | +/- 10 %   |
| Operating medium                          | Compressed air to ISO 8573-1:2010 [7:4:4]  |
| Note on operating and pilot medium        | Lubricated operation possible (in which case lubricated operation will always be required) |
| Corrosion resistance class CRC            | 1 - Low corrosion stress   |
| LABS (PWIS) conformity                    | VDMA24364-B2-L   |
| Media temperature                         | -5 °C...50 °C  |
| Degree of protection                      | IP40   |
| Pilot medium                              | Compressed air to ISO 8573-1:2010 [7:4:4]  |
| Ambient temperature                       | -5 °C...50 °C  |
| Electrical control                        | I-Port<br>IO-Link®<br>Multi-pin plug   |
| Note on materials                         | RoHS-compliant   |
| Type of actuation                         | Electric   |
| Electrical I/O system                     | yes  |
| Terminal type                             | 84   |

| Feature                        | Value      |
|--------------------------------|------------|
| Max. number of valve positions | 24         |
| Valve terminal structure       | Fixed grid |