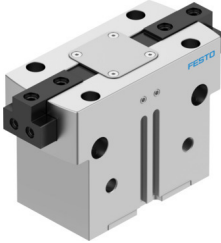


Parallel gripper HGPT-50-A-B-G1

Part number: 560223

FESTO



Data sheet

Feature	Value
Size	50
Stroke per gripper jaws	12 mm
Max. replacement accuracy	0.2 mm
Max. angular gripper jaw backlash ax, ay	0.1 deg
Max. gripper jaw backlash Sz	0.02 mm
Rotationally symmetrical	0.2 mm
Repetition accuracy, gripper	0.05 mm
Number of gripper jaws	2
Drive system	Pneumatic
Mounting position	optional
Mode of operation	Double-acting
Gripper function	Parallel
Gripper force back-up	During opening
Design	Wedge-shaped drive Force pilot operated motion sequence
Position detection	Via proximity switch
Operating pressure	4 bar...8 bar
Operating pressure of blocked air	0 bar...0.5 bar
Max. operating frequency of gripper	2 Hz
Min. opening time at 0.6 MPa (6 bar, 87 psi)	70 ms
Min. closing time at 0.6 MPa (6 bar, 87 psi)	153 ms
Max. mass per external gripper finger	640 g
Operating medium	Compressed air to ISO 8573-1:2010 [7:4:4]
Note on operating and pilot medium	Lubricated operation possible (in which case lubricated operation will always be required)
Corrosion resistance class CRC	2 - Moderate corrosion stress
LABS (PWIS) conformity	VDMA24364-B1/B2-L
Degree of protection	IP40
Ambient temperature	5 °C...60 °C
Mass moment of inertia	29.423 kgcm ²
Max. force on gripper jaw Fz static	3200 N
Max. torque at gripper Mx static	120 Nm

Feature	Value
Max. torque at gripper My static	120 Nm
Max. torque at gripper Mz static	100 Nm
Lubrication interval for guide components	5 MioCyc
Product weight	1832 g
Type of mounting	Via female thread and centring sleeve Via through-hole and centring sleeve Via through-hole and dowel pin Via female thread and dowel pin Either:
Pneumatic connection, blocked air	M5
Pneumatic connection	G1/8
Note on materials	RoHS-compliant
Material cover cap	High-alloy stainless steel
Material housing	Anodised aluminium
Material gripper jaws	Hardened steel