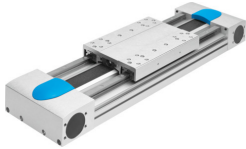


# Toothed belt axis EGC-HD-220- -TB

Part number: 556825

**FESTO**



## Data sheet

Feature	Value
Effective diameter of drive pinion	66.21 mm
Working stroke	50 mm...4750 mm
Size	220
Toothed-belt stretch	0.29 %
Toothed-belt pitch	8 mm
Mounting position	optional
Guide	Recirculating ball bearing guide
Design	Electromechanical linear axis With toothed belt
Type of motor	Stepper motor Servo motor
Functional principle of measuring system	Incremental
Max. acceleration	50 m/s <sup>2</sup>
Max. speed	5 m/s
Duty cycle	100%
LABS (PWIS) conformity	VDMA24364 zone III
Degree of protection	IP40
Ambient temperature	-10 °C...60 °C
2nd moment of area Iy	5580000 mm <sup>4</sup>
2nd moment of area Iz	35100000 mm <sup>4</sup>
Max. drive torque	59.58 Nm
Max. force Fy	13000 N
Max. force Fz	13000 N
Max. force Fy total axis	13000 N
Max. force Fz total axis	13000 N
Fy at theoretical life value of 100 km (only guide consideration)	47892 N
Fz at theoretical life value of 100 km (only guide consideration)	47892 N
Max. idle running transfer resistance	123.8 N
Max. moment Mx	900 Nm
Max. moment My	1450 Nm
Max. moment Mz	1450 Nm
Max. moment Mx total axis	900 Nm

Feature	Value
Max. moment My total axis	1450 Nm
Max. moment Mz total axis	1450 Nm
Mx at theoretical life value of 100 km (only guide consideration)	3315 Nm
My at theoretical life value of 100 km (only guide consideration)	5341 Nm
Mz at theoretical life value of 100 km (only guide consideration)	5341 Nm
Max. feed force Fx	1800 N
Frictional torque independent of load	4.1 Nm
Torsional mass moment of inertia It	5780000 mm <sup>4</sup>
Mass moment of inertia JH per metre of stroke	6.269 kgcm <sup>2</sup>
Mass moment of inertia JL per kg of working load	10.96 kgcm <sup>2</sup>
Mass moment of inertia JO	108.99 kgcm <sup>2</sup>
Mass moment of inertia JW for additional slide	80.66 kgcm <sup>2</sup>
Feed constant	208 mm/U
Reference service life	5000 km
Weight of slide	6317 g
Weight of additional slide	5498 g
Basic weight for 0 mm stroke	25510 g
Additional weight per 10 mm stroke	210 g
Material profile	Anodised wrought aluminium alloy
Note on materials	RoHS-compliant
Material drive cover	Anodised wrought aluminium alloy
Material pulleys	High-alloy stainless steel
Material slide	Anodised wrought aluminium alloy
Material toothed belt clamping piece	Beryllium bronze
Material toothed belt	Polychloroprene with glass filament and nylon coating Polyurethane with steel cord and nylon cover