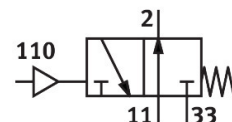
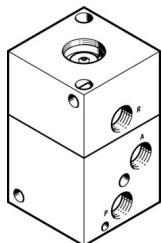


# Basic valve LOCB-3-1/4

Part number: 556345

FESTO



## Data sheet

Feature	Value
Valve function	3/2 open, single solenoid
Type of actuation	Pneumatic
Construction width	50 mm
Standard nominal flow rate (standardised to DIN 1343)	600 l/min
pneumatic working port	G1/4
Operating pressure	0.2 MPa...1 MPa 2 bar...10 bar
Design	Poppet seat
Type of reset	Mechanical spring
Nominal size	6.5 mm
Mounting position	optional
Pilot pressure	0.1 MPa...1 MPa 1 bar...10 bar
Operating medium	Compressed air to ISO 8573-1:2010 [7:4:4]
Note on operating and pilot medium	Lubricated operation possible (in which case lubricated operation will always be required)
Corrosion resistance class CRC	2 - Moderate corrosion stress
LABS (PWIS) conformity	VDMA24364-B1/B2-L
Media temperature	-10 °C...60 °C
Ambient temperature	-10 °C...60 °C
Product weight	495 g
Type of mounting	With through-hole
Pilot air port 12	M20x1
Pneumatic connection, port 1	G1/4
Pneumatic connection, port 2	G1/4
Pneumatic connection, port 3	G1/4
Material seals	NBR
Material housing	Aluminium Anodised