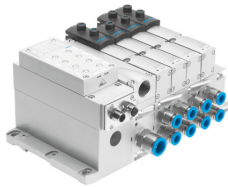


# Valve terminal VTSA-F-ASI

Part number: 555566

**FESTO**



## Data sheet

Feature	Value
Electrical control	Fieldbus
Electrical I/O system	yes
Terminal type	45
Operating medium	Compressed air to ISO 8573-1:2010 [7:4:4]
Note on operating and pilot medium	Lubricated operation possible (in which case lubricated operation will always be required)
Ambient temperature	-5 °C...50 °C
Storage temperature	-20 °C...60 °C
Relative air humidity	0 - 90%
Degree of protection	IP65
Corrosion resistance class CRC	0 - No corrosion stress
Operating pressure	-0.09 MPa...1 MPa -0.9 bar...10 bar
Pilot pressure	0.3 MPa...1 MPa 3 bar...10 bar
Operating pressure for valve terminal with internal pilot air supply	0.3 MPa...1 MPa 3 bar...10 bar 43.5 psi...145 psi
CE mark (see declaration of conformity)	To EU EMC Directive To EU Explosion Protection Directive (ATEX)
UKCA marking (see declaration of conformity)	To UK instructions for EMC To UK RoHS instructions
KC mark	KC-EMV
Approval	BIA C-Tick c UL us - Recognized (OL)
Explosion protection	Zone 2 (ATEX)
ATEX category gas	II 3G
Explosion ignition protection type for gas	Ex nA IIC T3 X Gc
Explosion ambient temperature	-5 °C <= Ta <= +50 °C
Note on materials	RoHS-compliant
Valve terminal structure	Modular, valve sizes can be mixed
Type of actuation	Electric

Feature	Value
Valve function	2x2/2-way, monostable, closed 2x3/2-way, monostable, closed 2x3/2-way, open, monostable 2x3/2-way, open/closed, monostable 5/2 double solenoid 5/2-way, bistable, dominant 5/2-way, monostable 5/2-way, monostable, safety function 5/3-way, pressurised 5/3 exhausted 5/3 closed 5/3-way, port 2 pressurised, 4 exhausted
Design	Piston gate valve
Valve size	18 mm 26 mm 42 mm 52 mm 65 mm
Pilot air supply	External Internal
Max. standard nominal flow rate	700 l/min at 18 mm 1350 l/min at 26 mm 1860 l/min at 42 mm 2900 l/min at 52 mm 4000 l/min at 65 mm
Suitability for vacuum	yes
Exhaust-air function	Via throttle plate
pneumatic working port	G1/8 G1/4 G3/8 G1/2 G1 QS-6 QS-8 QS-10 QS-12 QS-16
Signal status display	LED
Nominal operating voltage DC	24 V
Permissible voltage fluctuations	+/- 10 %