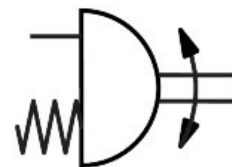
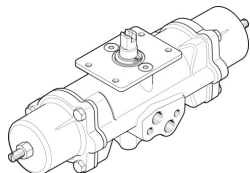


# Semi-rotary drive DAPS-0015-090-RS4-F03-CR

Part number: 552878

FESTO



## Data sheet

Feature	Value
Size of valve actuator	0015
Flange hole pattern	F03
Swivel angle	90 deg
Shaft connection depth	10.2 mm
Cushioning	No cushioning
Mounting position	optional
Mode of operation	Single-acting
Design	Scotch yoke system
Position detection	Without
Closing direction	Closes to the right
Safety Integrity Level (SIL)	Up to SIL 2 High Demand mode To SIL 2 Low Demand mode
Supply pressure for spring strength	0.56 MPa 5.6 bar
Operating pressure	0.56 MPa...0.84 MPa 5.6 bar...8.4 bar
Nominal operating pressure	0.56 MPa 5.6 bar
CE mark (see declaration of conformity)	To EU Explosion Protection Directive (ATEX)
UKCA marking (see declaration of conformity)	To UK EX instructions
Explosion protection	Zone 1 (ATEX) Zone 2 (ATEX) Zone 21 (ATEX) Zone 22 (ATEX)
Certificate issuing authority	German Technical Control Board North (TÜV Nord) 212170801
ATEX category gas	II 2G
ATEX category dust	II 2D
Explosion ignition protection type for gas	Ex h IIC T6...T3 Gb X
Explosion ignition protection type for dust	Ex h IIIC T85°C...T200°C Db X
Explosion ambient temperature	-20°C ≤ Ta ≤ +60°C
Operating medium	Compressed air to ISO 8573-1:2010 [7:4:4]
Note on operating and pilot medium	Lubricated operation possible (in which case lubricated operation will always be required)
Corrosion resistance class CRC	3 - high corrosion stress

Feature	Value
LABS (PWIS) conformity	VDMA24364-B1/B2-L
Ambient temperature	-20 °C...80 °C
Torque at nominal operating pressure and 0° swivel angle	15 Nm
Torque at nominal operating pressure and 50° swivel angle	7.5 Nm
Torque at nominal operating pressure and 90° swivel angle	10 Nm
Spring return torque at 0° swivel angle	10 Nm
Spring return torque at 50° swivel angle	7.5 Nm
Spring return torque at 90° swivel angle	15 Nm
Spring strength	4
Air consumption at 0.6 MPa (6 bar, 87 psi) per cycle 0°-nominal swivel angle-0°	0.6 l
Product weight	1600 g
Shaft connection	T9
Pneumatic connection	G1/8
Note on materials	RoHS-compliant
Material cover	High-alloy stainless steel
Material number cover	1.4408
Material seals	FPM NBR PUR
Material housing	High-alloy stainless steel
Material number housing	1.4408
Material screws	High-alloy stainless steel
Material shaft	High-alloy stainless steel
Material number shaft	1.4301