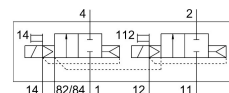
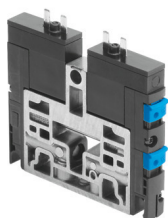


Solenoid valve

CPV10-M1H-2X2-GLS-M7-B-EX

Part number: 550701

FESTO



Data sheet

Feature	Value
Valve function	2x2/2-way, monostable, closed
Type of actuation	Electric
Valve size	10 mm
Standard nominal flow rate (standardised to DIN 1343)	400 l/min
pneumatic working port	M7
Operating voltage	24V DC
Operating pressure	0 MPa...1 MPa 0 bar...10 bar
Design	Piston gate valve
Type of reset	Pneumatic spring
Degree of protection	IP50
Nominal size	4 mm
Exhaust-air function	Without flow control option
Sealing principle	Soft
Mounting position	optional
Manual override	Detenting Non-detenting
Type of piloting	Pilot actuated
Pilot air supply	External Internal
Flow direction	Non-reversible
lap	Overlap
Pilot pressure	0.3 MPa...0.8 MPa 3 bar...8 bar
b value	0.35
C value	1.6 l/sbar
Switching time off	17 ms
Switching time on	15 ms
Duty cycle	100% in conjunction with holding current reduction
Required current consumption	0.016 A
Max. input power P _i	0.76 W
Max. input voltage U _i	32 V

Feature	Value
Max. input current Ii	0.2 A
Effective internal inductivity Li	Negligibly low
Effective internal capacitance Ci	Negligibly low
Operating medium	Compressed air to ISO 8573-1:2010 [7:4:4]
Note on operating and pilot medium	Lubricated operation possible (in which case lubricated operation will always be required)
Corrosion resistance class CRC	2 - Moderate corrosion stress
LABS (PWIS) conformity	VDMA24364-B1/B2-L
Storage temperature	-20 °C...40 °C
Media temperature	-5 °C...50 °C
Ambient temperature	-5 °C...50 °C
Product weight	70 g
Type of mounting	With through-hole
Pilot air port 12/14	Common line
Pilot exhaust port 82/84	Common line
Pneumatic connection, port 1	Common line
Pneumatic connection, port 11	Common line
Pneumatic connection, port 2	M7
Pneumatic connection 3/5 combined	Common line
Pneumatic connection, port 4	M7
Note on materials	RoHS-compliant
Material seals	HNBR NBR
Material housing	Die-cast aluminium Brass POM PPS Steel