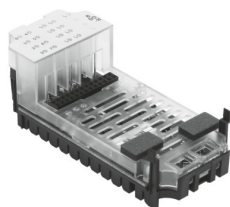


# Output module CPX-8DA-H

Part number: 550204

**FESTO**



## Data sheet

| Feature  | Value   |
|--|---|
| Dimensions (W x L x H)                             | (incl. interlinking block and connection technology)<br>50 x 107 x 50 mm  |
| Product weight                                     | 48 g  |
| Ambient temperature                                | -5 °C...50 °C   |
| Storage temperature                                | -20 °C...70 °C  |
| Degree of protection                               | Dependent on the manifold block   |
| Corrosion resistance class CRC                     | 1 - Low corrosion stress<br>(when installed)  |
| LABS (PWIS) conformity                             | VDMA24364-B2-L  |
| Material housing                                   | PA-reinforced<br>PC   |
| LED display  | 1 Group diagnostics<br>8 channel diagnostics<br>8 Channel status  |
| Diagnosis  | Short circuit/overload per channel<br>Undervoltage of outputs   |
| Number of outputs                                  | 8   |
| Parameterisation                                   | Fail-safe per channel<br>Forcing per channel<br>Idle mode per channel<br>Behaviour after short circuit<br>Module monitoring |
| Operational voltage range DC                       | 18 V...30 V   |
| Nominal operating voltage DC                       | 24 V  |
| Intern power consumption nominal operating voltage | Typ. 34 mA  |
| Characteristic for outputs                         | Based on IEC1131-T2   |
| Switching logic for outputs                        | PNP (positive switching)  |
| Max. residual current outputs per module           | 8.4 A   |
| Max. power supply per channel                      | 2.1 A (50 W lamp load), per channel pair  |
| Isolation channel - channel                        | no  |
| Isolation channel - internal bus                   | Yes, with intermediate air supply   |
| Fuse protection (short circuit)                    | Internal electronic fuse per channel<br>Additional fuse   |