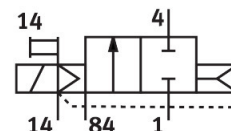


# Solenoid valve

## CPVSC1-M1HT-D-T-Q4C

Part number: 548045

**FESTO**



## Data sheet

| Feature   | Value  |
|---|--|
| Valve function  | 2/2-way, closed, monostable  |
| Type of actuation                                     | Electric   |
| Valve size  | 10 mm  |
| Standard nominal flow rate (standardised to DIN 1343) | 150 l/min  |
| pneumatic working port                                | QS-4   |
| Operating voltage                                     | 24V DC   |
| Operating pressure                                    | -0.09 MPa...0.7 MPa<br>-0.9 bar...7 bar  |
| Design  | Piston gate valve  |
| Type of reset   | Pneumatic spring   |
| Approval  | c UL us - Recognized (OL)  |
| Degree of protection                                  | IP40   |
| Exhaust-air function                                  | Without flow control option  |
| Sealing principle                                     | Soft   |
| Mounting position                                     | optional   |
| Manual override                                       | Non-detenting  |
| Type of piloting                                      | Pilot actuated   |
| Pilot air supply                                      | External   |
| Flow direction  | Non-reversible   |
| lap   | Overlap  |
| Pilot pressure  | 0.3 MPa...0.7 MPa<br>3 bar...7 bar   |
| Switching time off                                    | 10 ms  |
| Switching time on                                     | 10 ms  |
| Max. positive test pulse with 0 signal                | 500 µs   |
| Max. negative test pulse with 1 signal                | 400 µs   |
| Characteristic coil data                              | 24 V DC: 1.0 W   |
| Operating medium                                      | Compressed air to ISO 8573-1:2010 [7:4:4]  |
| Note on operating and pilot medium                    | Lubricated operation possible (in which case lubricated operation will always be required) |
| Vibration resistance                                  | Transport application test with severity level 2 to FN 942017-4 and EN 60068-2-6           |

| Feature                           | Value   |
|-----------------------------------|---|
| Shock resistance                  | Shock test with severity level 2 to FN 942017-5 and EN 60068-2-27 |
| Corrosion resistance class CRC    | 1 - Low corrosion stress  |
| LABS (PWIS) conformity            | VDMA24364-B2-L  |
| Media temperature                 | -5 °C...50 °C   |
| Ambient temperature               | -5 °C...50 °C   |
| Product weight                    | 30.5 g  |
| Electrical connection             | 2-pin<br>Plugs  |
| Type of mounting                  | With through-hole   |
| Pilot exhaust port 82/84          | Common line   |
| Pneumatic connection, port 1      | Common line   |
| Pneumatic connection, port 2      | QS-4  |
| Pneumatic connection 3/5 combined | Common line   |
| Pneumatic connection, port 4      | QS-4  |
| Note on materials                 | RoHS-compliant  |
| Material seals                    | NBR   |
| Material housing                  | Die-cast aluminium  |