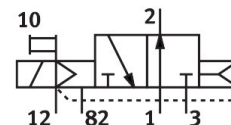
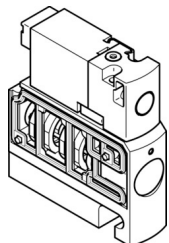


Solenoid valve

CPVSC1-M5H-N-H-Q40

Part number: 547391

FESTO



Data sheet

| Feature | Value |
|-------------------------------------------------------|--------------------------------------------------------------------------------------------|
| Valve function | 3/2 open, single solenoid |
| Type of actuation | Electric |
| Valve size | 10 mm |
| Standard nominal flow rate (standardised to DIN 1343) | 170 l/min |
| pneumatic working port | QS-4 |
| Operating voltage | 12V DC |
| Operating pressure | -0.09 MPa...0.7 MPa -0.9 bar...7 bar |
| Design | Piston gate valve |
| Type of reset | Pneumatic spring |
| Approval | c UL us - Recognized (OL) |
| Degree of protection | IP40 |
| Exhaust-air function | Without flow control option |
| Sealing principle | Soft |
| Mounting position | optional |
| Manual override | Non-detenting |
| Type of piloting | Pilot actuated |
| Pilot air supply | External |
| Flow direction | Non-reversible |
| lap | Overlap |
| Pilot pressure | 0.3 MPa...0.7 MPa 3 bar...7 bar |
| Switching time off | 10 ms |
| Switching time on | 10 ms |
| Max. positive test pulse with 0 signal | 500 µs |
| Max. negative test pulse with 1 signal | 400 µs |
| Characteristic coil data | 12 V DC: 1.0 W |
| Operating medium | Compressed air to ISO 8573-1:2010 [7:4:4] |
| Note on operating and pilot medium | Lubricated operation possible (in which case lubricated operation will always be required) |
| Vibration resistance | Transport application test with severity level 2 to FN 942017-4 and EN 60068-2-6 |

| Feature | Value |
|-----------------------------------|-------------------------------------------------------------------|
| Shock resistance | Shock test with severity level 2 to FN 942017-5 and EN 60068-2-27 |
| Corrosion resistance class CRC | 1 - Low corrosion stress |
| LABS (PWIS) conformity | VDMA24364-B2-L |
| Media temperature | -5 °C...50 °C |
| Ambient temperature | -5 °C...50 °C |
| Product weight | 30.5 g |
| Electrical connection | 2-pin Plugs |
| Type of mounting | With through-hole |
| Pilot exhaust port 82/84 | Common line |
| Pneumatic connection, port 1 | Common line |
| Pneumatic connection, port 2 | QS-4 |
| Pneumatic connection 3/5 combined | Common line |
| Pneumatic connection, port 4 | QS-4 |
| Note on materials | RoHS-compliant |
| Material seals | NBR |
| Material housing | Die-cast aluminium |