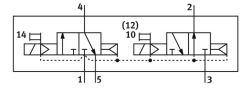
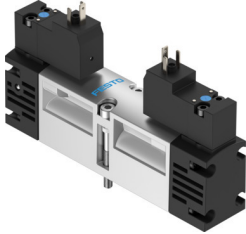


# Solenoid valve VSVA-B-T32H-AH-A1-3AC1

Part number: 547 212

**FESTO**



## Data sheet

| Feature   | Value  |
|---|--|
| Valve function  | 2x3/2-way, open/closed, monostable   |
| Type of actuation                                     | Electric   |
| Valve size  | 26 mm  |
| Standard nominal flow rate (standardised to DIN 1343) | 900 l/min  |
| pneumatic working port                                | Sub-base size 26 mm to ISO 15407-1<br>Sub-base size 01 to VDMA 24563<br>G1/4 |
| Operating voltage                                     | 230V AC  |
| Operating pressure                                    | 0.2 MPa...1 MPa<br>2 bar...10 bar  |
| Design  | Piston gate valve  |
| Type of reset   | Pneumatic spring   |
| CE mark (see declaration of conformity)               | To EU Low Voltage Directive  |
| UKCA marking (see declaration of conformity)          | To UK instructions for EMC   |
| Degree of protection                                  | IP65<br>NEMA 4   |
| Nominal size  | 9 mm   |
| Exhaust-air function                                  | With flow control option   |
| Sealing principle                                     | Soft   |
| Mounting position                                     | optional   |
| Conforms to standard                                  | ISO 15407-1<br>VDMA 24563  |
| Manual override                                       | Non-detenting  |
| Type of piloting                                      | Pilot actuated   |
| Pilot air supply                                      | Internal   |
| Flow direction  | Non-reversible   |
| lap   | Overlap  |
| Signal status display                                 | LED  |
| Pilot pressure  | 0.3 MPa...1 MPa<br>3 bar...10 bar  |
| Flow rate of valve                                    | 1250 l/min   |
| Flow rate of valve on individual sub-base             | 1000 l/min   |
| Flow rate of pneumatically interlinked valve          | 900 l/min  |

| Feature                                   | Value  |
|---|--|
| Switching time off                        | 28 ms  |
| Switching time on                         | 20 ms  |
| Duty cycle                                | 100%   |
| Characteristic coil data                  | 230 V AC: 50/60 Hz, pick-up power 2.9 VA, holding power 2.1 VA                             |
| Permissible voltage fluctuations          | -15%/+10%  |
| Operating medium                          | Compressed air to ISO 8573-1:2010 [7:4:4]  |
| Note on operating and pilot medium        | Lubricated operation possible (in which case lubricated operation will always be required) |
| Vibration resistance                      | Transport application test with severity level 2 to FN 942017-4 and EN 60068-2-6           |
| Shock resistance                          | Shock test with severity level 2 to FN 942017-5 and EN 60068-2-27                          |
| Corrosion resistance class CRC            | 0 - No corrosion stress  |
| LABS (PWIS) conformity                    | VDMA24364-B1/B2-L  |
| Media temperature                         | -5 °C...50 °C  |
| Relative air humidity                     | 0 - 90%  |
| Sound pressure level                      | 85 dB(A)   |
| Pilot medium                              | Compressed air to ISO 8573-1:2010 [7:4:4]  |
| Ambient temperature                       | -5 °C...50 °C  |
| Max. tightening torque for valve mounting | 2 Nm   |
| Product weight                            | 305 g  |
| Electrical connection                     | Type C<br>With protective earth conductor<br>To DIN EN 175301-803                          |
| Type of mounting                          | On sub-base  |
| Auxiliary pilot air port 12               | Sub-base size 26 mm to ISO 15407-1   |
| Auxiliary pilot air port 14               | Sub-base size 26 mm to ISO 15407-1   |
| Pilot exhaust port 82/84                  | Ducted<br>Not ducted as per standard   |
| Pneumatic connection, port 1              | Sub-base size 26 mm to ISO 15407-1   |
| Pneumatic connection, port 2              | Sub-base size 26 mm to ISO 15407-1   |
| Pneumatic connection, port 3              | Sub-base size 26 mm to ISO 15407-1   |
| Pneumatic connection, port 4              | Sub-base size 26 mm to ISO 15407-1   |
| Pneumatic connection, port 5              | Sub-base size 26 mm to ISO 15407-1   |
| Pilot control interface                   | To ISO 15218   |
| Note on materials                         | RoHS-compliant   |
| Material seals                            | HNBR<br>NBR  |
| Material housing                          | Die-cast aluminium   |
| Material screws                           | Steel<br>Galvanised  |