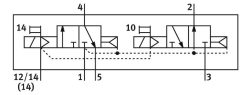
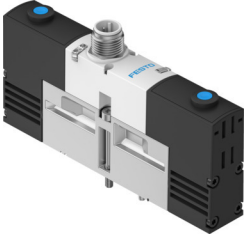


Solenoid valve

VSVA-B-T32H-AZH-A2-1R5L

Part number: 546776

FESTO



Data sheet

| Feature | Value |
|---|--|
| Valve function | 2x3/2-way, open/closed, monostable |
| Type of actuation | Electric |
| Construction width | 18 mm |
| Standard nominal flow rate (standardised to DIN 1343) | 400 l/min |
| pneumatic working port | Sub-base size 18 mm to ISO 15407-1 Sub-base size 02 to VDMA 24563 |
| Operating voltage | 24V DC |
| Operating pressure | 0.3 MPa...1 MPa 3 bar...10 bar |
| Design | Piston gate valve |
| Type of reset | Pneumatic spring |
| Approval | C-Tick c UL us - Recognized (OL) |
| CE mark (see declaration of conformity) | To EU EMC Directive |
| UKCA marking (see declaration of conformity) | To UK instructions for EMC To UK RoHS instructions |
| Degree of protection | IP65 |
| Nominal size | 5 mm |
| Exhaust-air function | With flow control option |
| Sealing principle | Soft |
| Mounting position | optional |
| Conforms to standard | ISO 15407-1 VDMA 24563 |
| Manual override | Non-detenting |
| Type of piloting | Pilot actuated |
| Pilot air supply | External |
| Flow direction | Non-reversible |
| lap | Overlap |
| Reverse polarity protection | For all electrical connections |
| Additional functions | Holding current reduction Safety shut-off |
| Signal status display | LED |

| Feature | Value |
|--|--|
| Pilot pressure | 0.3 MPa...0.8 MPa 3 bar...8 bar |
| Flow rate of valve | 600 l/min |
| Flow rate of valve on individual sub-base | 450 l/min |
| Flow rate of pneumatically interlinked valve | 400 l/min |
| Switching time off | 22 ms |
| Switching time on | 10 ms |
| Operational voltage range DC | 21.6 V...26.4 V |
| Duty cycle | 100% |
| Max. positive test pulse with 0 signal | 500 µs |
| Max. negative test pulse with 1 signal | 500 µs |
| Characteristic coil data | 24 V DC: low-current phase 1.0 W, high-current phase 2.4 W |
| Operating medium | Compressed air to ISO 8573-1:2010 [7:4:4] |
| Note on operating and pilot medium | Lubricated operation possible (in which case lubricated operation will always be required) |
| Vibration resistance | Transport application test with severity level 2 to FN 942017-4 and EN 60068-2-6 |
| Shock resistance | Shock test with severity level 2 to FN 942017-5 and EN 60068-2-27 |
| Corrosion resistance class CRC | 2 - Moderate corrosion stress |
| LABS (PWIS) conformity | VDMA24364-B1/B2-L |
| Media temperature | -5 °C...50 °C |
| Relative air humidity | 0 - 90% |
| Protection against direct and indirect contact | PELV |
| Ambient temperature | -5 °C...50 °C |
| Max. tightening torque for valve mounting | 0.9 Nm...1.1 Nm |
| Product weight | 140 g |
| Electrical connection | 3-pin M12x1 Central plug Round design |
| Type of mounting | On sub-base |
| Note on materials | RoHS-compliant |