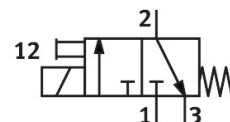
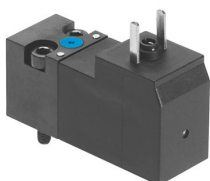


# Solenoid valve

## VSCS-B-M32-MH-WA-1AC1

Part number: 546258

**FESTO**



## Data sheet

| Feature   | Value  |
|---|--|
| Valve function  | 3/2-way, closed, monostable  |
| Type of actuation                                     | Electric   |
| Construction width                                    | 15 mm  |
| Standard nominal flow rate (standardised to DIN 1343) | 18 l/min   |
| pneumatic working port                                | Sub-base size 15 mm to ISO 15218   |
| Operating voltage                                     | 24V AC   |
| Operating pressure                                    | 0 MPa...1 MPa<br>0 bar...10 bar<br>0 psi...145 psi   |
| Type of reset   | Mechanical spring  |
| Degree of protection                                  | IP65   |
| Sealing principle                                     | Soft   |
| Mounting position                                     | optional   |
| Conforms to standard                                  | ISO 15218  |
| Manual override                                       | Non-detenting  |
| Type of piloting                                      | Direct   |
| Flow direction  | Non-reversible   |
| lap   | Underlap   |
| Note on forced dynamization                           | Switching frequency min. 1/week  |
| Switching time off                                    | 6 ms   |
| Switching time on                                     | 6 ms   |
| Duty cycle  | 100%   |
| Characteristic coil data                              | 24 V AC: 50/60 Hz, pick-up power 3.1 VA, holding power 2.3 VA                              |
| Permissible voltage fluctuations                      | -15%/+10%  |
| Operating medium                                      | Compressed air to ISO 8573-1:2010 [7:4:4]  |
| Note on operating and pilot medium                    | Lubricated operation possible (in which case lubricated operation will always be required) |
| Vibration resistance                                  | Transport application test with severity level 2 to FN 942017-4 and EN 60068-2-6           |
| Shock resistance                                      | Shock test with severity level 2 to FN 942017-5 and EN 60068-2-27                          |
| Corrosion resistance class CRC                        | 2 - Moderate corrosion stress  |
| LABS (PWIS) conformity                                | VDMA24364-C1-L   |

| Feature                      | Value                          |
|------------------------------|--------------------------------|
| Media temperature            | -10 °C...50 °C                 |
| Ambient temperature          | -10 °C...50 °C                 |
| Electrical connection        | Type C<br>To DIN EN 175301-803 |
| Pneumatic connection, port 1 | Sub-base                       |
| Pneumatic connection, port 2 | Sub-base                       |
| Pneumatic connection, port 3 | Sub-base                       |
| Note on materials            | RoHS-compliant                 |
| Material seals               | NBR                            |