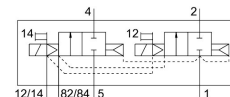
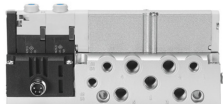


# Solenoid valve

## VMPA1-M1H-I-S-M7-PI

Part number: 545231

FESTO



## Data sheet

Feature	Value
Valve function	2x2/2-way, monostable, closed
Type of actuation	Electric
Valve size	10 mm
Standard nominal flow rate (standardised to DIN 1343)	260 l/min
pneumatic working port	M7
Operating voltage	24V DC
Operating pressure	0.3 MPa...1 MPa 3 bar...10 bar
Design	Piston gate valve
Type of reset	Pneumatic spring
Approval	c UL us - Recognized (OL)
CE mark (see declaration of conformity)	To EU EMC Directive In accordance with EU RoHS Directive
UKCA marking (see declaration of conformity)	To UK instructions for EMC To UK RoHS instructions
Degree of protection	IP65 To IEC 60529
Exhaust-air function	With flow control option
Sealing principle	Soft
Mounting position	optional
Manual override	Detenting Non-detenting
Type of piloting	Pilot actuated
Pilot air supply	External
Flow direction	Non-reversible
lap	Overlap
Signal status display	yes
Pilot pressure	0.3 MPa...0.8 MPa 3 bar...8 bar
Suitability for vacuum	no
Standard nominal flow rate with QS-6	230 l/min
Switching time off	20 ms
Switching time on	8 ms

Feature	Value
Max. positive test pulse with 0 signal	400 µs
Max. negative test pulse with 1 signal	200 µs
Permissible voltage fluctuations	+/- 25%
Operating medium	Compressed air to ISO 8573-1:2010 [7:4:4]
Note on operating and pilot medium	Lubricated operation possible (in which case lubricated operation will always be required)
Vibration resistance	Transport application test with severity level 2 to FN 942017-4 and EN 60068-2-6
Shock resistance	Shock test with severity level 2 to FN 942017-5 and EN 60068-2-27
Corrosion resistance class CRC	1 - Low corrosion stress
LABS (PWIS) conformity	VDMA24364-B1/B2-L
Storage temperature	-20 °C...40 °C
Media temperature	-5 °C...50 °C
Relative air humidity	Max. 90% at 40°C
Ambient temperature	-5 °C...50 °C
Max. tightening torque for valve mounting	0.25 Nm
Product weight	143 g
Electrical connection	4-pin M8x1 Plugs To EN 60947-5-2
Type of mounting	With through-hole
Pilot air port 12/14	M5
Pilot exhaust port 82/84	M5
Pneumatic connection, port 1	M7
Pneumatic connection, port 2	M7
Pneumatic connection, port 3	M7
Pneumatic connection, port 4	M7
Pneumatic connection, port 5	M7
Note on materials	RoHS-compliant
Material seals	NBR
Material housing	Die-cast aluminium